

**City of Portage la Prairie**  
**TRAFFIC BY-LAW NO. 01-8105**

**TABLE OF CONTENTS**

<b>I</b>	<b>INTERPRETATION, DEFINITIONS AND APPLICATION .....</b>	<b>1</b>
1.	INTERPRETATION .....	1
2.	CONTINUING CONSOLIDATION .....	1
3.	LIST OF SCHEDULES .....	2
4.	AMENDMENT OF SCHEDULES.....	2
5.	CITATION .....	2
6.	DEFINITIONS .....	2
7.	APPLICATION .....	9
<b>II</b>	<b>TRAFFIC CONTROL AND TRAFFIC CONTROL DEVICES .....</b>	<b>10</b>
8.	TRAFFIC AUTHORITY.....	10
9.	TRAFFIC CONTROL DEVICES.....	10
10.	TEMPORARY TRAFFIC CONTROL DEVICES .....	11
<b>III</b>	<b>GENERAL USE PROVISIONS .....</b>	<b>12</b>
11.	VEHICLES IN FUNERAL PROCESSIONS.....	12
12.	HORSES AND DOMESTIC ANIMALS .....	12
13.	BICYCLES .....	13
14.	PEDESTRIAN'S RIGHTS AND DUTIES.....	13
15.	SOLICITING RIDES ON A STREET .....	13
16.	DEVICE RESTRICTIONS ON A STREET .....	13
<b>IV</b>	<b>GENERAL STREET REGULATIONS .....</b>	<b>14</b>
17.	WORKING IN OR UPON ANY ROADWAY .....	14
18.	DAMAGING STRUCTURES IN STREETS .....	14
19.	NUISANCE AND DANGEROUS CONDITIONS .....	14
20.	SPECIAL EVENTS .....	15
21.	REMEDIAL ACTION.....	15
22.	SNOW, ICE OR DIRT – BUSINESS PREMISES.....	15
23.	SNOW OR ICE – ALL PROPERTIES .....	16
24.	SANDWICH BOARD SIGNS.....	16
<b>V</b>	<b>GENERAL TRAFFIC REGULATIONS .....</b>	<b>17</b>
25.	SPEED IN CITY .....	17
26.	AVOIDING CONFLICT WITH FIRE APPARATUS.....	17
27.	PARADES .....	17
28.	DRIVING THROUGH BARRICADED STREETS .....	17
29.	VEHICLES NOT TO DAMAGE ROADWAYS .....	17
30.	VEHICLES – NO LOUD SPEAKER .....	18
31.	"U"-TURNS RESTRICTED.....	18
32.	ONE-WAY STREETS.....	18
33.	BLOCKING INTERSECTION .....	18
34.	LOADING AND UNLOADING VEHICLES .....	18
35.	DELIVERIES TO BE MADE IN LANE .....	19
36.	VEHICLES BACKED TO CURB .....	19
37.	PARKING OF MOVING VANS, OR OTHER SIMILAR MOTOR VEHICLE INTENDED FOR SUCH PURPOSE, AND LOADS OF MATERIALS .....	19
38.	STANDING FOR LOADING AND UNLOADING BUS PASSENGERS .....	20
39.	TRANSPORTATION OF WASTES .....	20

---

---

<b>VI</b>	<b>STOPPING, STANDING AND PARKING.....</b>	<b>21</b>
40.	METHOD OF STANDING OR PARKING OF VEHICLES.....	21
41.	ANGLE PARKING .....	21
42.	GENERAL STANDING AND PARKING PROHIBITIONS .....	21
43.	PARKING OF LARGE TRUCKS, BUSES, TRAILERS AND RECREATIONAL VEHICLES.....	22
44.	EXEMPTIONS TO PARKING PROVISIONS .....	22
45.	PARKING FOR DISABLED PERSONS.....	23
46.	SPECIAL PARKING PERMITS AND SPECIAL PARKING ZONES.....	23
47.	PARKING PROHIBITION TO ACCOMMODATE SNOW CLEARING.....	25
48.	LIMITED TIME PARKING.....	26
49.	PARKING METERS AND PARKING METER ZONES .....	26
50.	METERED PARKING SPACE RENTALS .....	28
51.	SATURDAY, SUNDAY AND HOLIDAY EXEMPTIONS .....	28
52.	DESIGNATED EXEMPTIONS AT PARKING METERS .....	29
53.	CITATION OF VEHICLE PARKED OR LEFT IN VIOLATION OF BY-LAW .....	29
54.	LIENS AND JUDGEMENTS RESPECTING OUTSTANDING TRAFFIC CITATION(S).....	29
55.	REMOVAL, IMPOUNDING AND RETURN OF VEHICLES .....	29
56.	PARKING ON PRIVATE PROPERTY .....	30
57.	OFF-STREET PARKING LOTS.....	31
58.	PARKING VIOLATIONS.....	32
59.	OTHER REGULATIONS .....	32
60.	TRANSPORTATION OF DANGEROUS GOODS .....	33
61.	EXCAVATIONS.....	33
62.	DRIVEWAY PERMITS.....	34
<b>VII</b>	<b>PENALTIES.....</b>	<b>35</b>
63.	LIABILITY OF OWNERS TO CONVICTION .....	35
64.	PARKING VIOLATIONS.....	35
65.	GENERAL PENALTIES.....	35
<b>VIII</b>	<b>REPEAL.....</b>	<b>36</b>
66.	REPEAL OF BY-LAWS .....	36
67.	COMING INTO FORCE.....	36

## City of Portage la Prairie

### **TRAFFIC BY-LAW NO. 01-8105**

BEING A BY-LAW of The City of Portage la Prairie, in Manitoba, for the regulation of traffic and parking and the use of Streets and Sidewalks in the City.

WHEREAS the City of Portage la Prairie is empowered under Part 7 of The Municipal Act S.M. 1996 c.58; Parts III, IV and VI of The Highway Traffic Act RSM 1985/86 c.H60; and the Dangerous Goods Handling and Transportation Act RSM 1987 c.D12 to regulate traffic and parking and the use of Streets and Sidewalks by by-law and to impose penalties for the violation of such by-law;

AND WHEREAS it is deemed expedient and in the public interest to regulate traffic and parking and the use of Streets and Sidewalks in the City of Portage la Prairie.

NOW THEREFORE THE COUNCIL OF THE CITY OF PORTAGE LA PRAIRIE IN OPEN SESSION ASSEMBLED, HEREBY ENACTS AS A BY-LAW AS FOLLOWS:

#### **I INTERPRETATION, DEFINITIONS AND APPLICATION**

##### **1. INTERPRETATION**

Pedestrians and all Persons driving, operating or using in any way a Vehicle on any Street, Public Walkway, Off Street Parking Area, other public property, or on Private Property (where and to the extent as authorized by this by-law), within the limits of the City shall in all respects conform to the provisions of this by-law save and except where provisions of this by-law are inconsistent with provisions of relevant Provincial or Federal Statutes in which case the provisions of such statutes shall override the provisions of this by-law.

##### **2. CONTINUING CONSOLIDATION**

- a) The Manager of Administration may cause to be prepared and printed, and kept up to date, a continuing consolidation of this by-law, and indices and appendices thereto, and may make such arrangements with respect thereto, and with respect to matters incidental thereto, as may be required.
- b) Where a continuing consolidation of this by-law is prepared, all approved revisions thereto shall bear the designation and be located as follows:
  - 1) When a specific portion has been amended or replaced by an amending by-law, the designation '[AM. B/L #]' shall be inserted immediately following the affected block of text.
  - 2) When a specific portion has been repealed or deleted by an amending by-law, the designation '[REP. B/L #]' shall be inserted adjacent to the current section, subsection, paragraph or clause number in place of the removed text.
  - 3) When a new portion has been enacted herein by an amending by-law, the designation '[EN. B/L #]' shall be inserted immediately following the added block of text.
  - 4) When any of the designations referred to in paragraphs 1), 2), and 3) above are inserted within the text of this by-law, the figure '#' shall be replaced by the actual number of the respective amending by-law.
  - 5) Where more than one clause, paragraph, or subsection of any particular section is affected by the same amending by-law, the designation may be placed at the end of each clause, paragraph, or subsection so affected or, at the left aligned margin of the paragraph, subsection, or section so affected, whichever is deemed to have more clarity in each particular instance.

### 3. LIST OF SCHEDULES

Attached to and forming part of this by-law are the following schedules:

- Schedule "A" – Dangerous Goods Truck Routes
- Schedule "B" – Dangerous Goods Prohibited Truck Routes
- Schedule "C" – Truck Routes
- Schedule "D" – No Parking Areas
- Schedule "E" – Metered Spaces
- Schedule "F" – Designated Highways
- Schedule "G" – Request for Parade or Street Closure
- Schedule "H" – School Bus Zones
- Schedule "I" – Speed Zones (AM by By-Law 04-8237)
- Schedule "J" – One-Way Streets and Lanes/Alleys [AM by By-Law 07-8359]

### 4. AMENDMENT OF SCHEDULES

The Traffic Authority may from time to time, by resolution, amend each and every schedule attached to this By-Law.

### 5. CITATION

This by-law shall be known as "The City of Portage la Prairie Traffic By-Law".

### 6. DEFINITIONS

- a) Unless otherwise expressly provided or unless the context otherwise requires, words and expressions in this by-law have the same meaning as the same words and expressions in The Highway Traffic Act of the Province of Manitoba.
  - b) In this By-Law:
    - 1) "Act" means The Highway Traffic Act of the Province of Manitoba and current amendments thereto unless otherwise indicated.
    - 2) "Alley" means a Lane as defined hereinafter.
    - 3) "Approach" means that portion of a Curb, Sidewalk or Boulevard improved or designed for the passage of vehicular traffic.
    - 4) "Arterial Roadway" means a Roadway used primarily for through traffic and usually on a continuous route.
    - 5) "Banner" means any sign, other than a Traffic Control Device, constructed of cloth, plastic or similar material, and erected across or adjacent to a Street for the sole purpose of promoting the City in general or a recognized charitable organization, but shall not include commercial advertising signs.
    - 6) "Bicycle" means a device having any number of wheels upon which a person sits astride and which is propelled solely by human muscular power through use of pedals.
    - 7) "Board" means The Highway Traffic Board as appointed by the Province of Manitoba pursuant to the Act.
-

- 8) "Boulevard" means that portion of a Street not meant for vehicular traffic between the Curb lines or the lateral lines of the Roadway and the adjoining property line, including the Sidewalk; and that portion of a Street between the Curb lines or lateral lines of the Roadways of a divided Street and includes Medians as hereinafter defined;
  - 9) "Bus" means a free-wheeled Vehicle having a self-contained source of motive power designed and used for transporting more than seven passengers for hire in the City authorized to pick up and deposit passengers, but also includes free-wheeled Vehicles used for transporting less than seven passengers for hire and operated by the Portage la Prairie and District Handivan Inc. Any Bus which does not meet these requirements shall, for the purpose of this by-law, be considered a Truck as hereinafter defined.
  - 10) "Bus Lane" means a Traffic Lane reserved primarily or solely for Buses, either in transporting, loading or unloading passengers and so designated by Traffic Control Devices.
  - 11) "Bus Stop" means a designated portion of a Roadway adjacent to the Curb or road edge, where there is no Curb, reserved for the loading and unloading of passengers of Buses; and where the Parking, Standing and Stopping by all other Vehicles is prohibited.
  - 12) "Business" includes every trade, occupation, profession or venture conducted or carried on with a view to profit or gain.
  - 13) "Cite" or "Cited" means the issuance of a Traffic Citation in relation to violation of parking offences.
  - 14) "City" means The City of Portage la Prairie or the area contained within the boundaries thereof.
  - 15) "City Manager" means the City Manager for the City as appointed by by-law and anyone acting or authorized to act on his/her behalf.
  - 16) "Collector Roadway" means a Roadway with Intersections at grade and direct access to abutting property, and on which geometric design and traffic control measures are used to expedite the safe movement of through traffic.
  - 17) "Council" means the Council of the City.
  - 18) "Crosswalk" means that part of a Street in an Intersection or elsewhere distinctly indicated for Pedestrian crossing by Traffic Control Device or by lines or other markings on the surface thereof and shall include the area adjacent to an Intersection which is unmarked but has a Sidewalk on both sides of the Roadway.
  - 19) "Curb" means a vertical or sloping Structure along the edge of a pavement or shoulder forming part of a gutter, strengthening or protecting the edge, and clearly defining the edge to Vehicle operators. The surface of the Curb facing the general direction of the pavement is called the "face".
  - 20) "Curbside Parking" means to park in a parking lane.
  - 21) "Dangerous Goods" means any product, substance or organism, including hazardous wastes, as referred to in The Dangerous Goods Handling and Transportation Act RSM 1987 C. D12 and the regulations thereto.
  - 22) "Dangerous Goods Truck Routes" means Truck Routes designed for the purpose of transporting Dangerous Goods.
-

- 23) "Designated Highway", for the purpose of this by-law, means any Provincial Highway or portion thereof within the City for which the City is designated as the Traffic Authority but for which the Province provides maintenance, construction and Traffic Control Devices.
- 24) "Director" means the Director of Operations for the City and any one acting or authorized to act on his/her behalf.
- 25) "Detachment Commander" means the Detachment Commander for the RCMP for the City and anyone acting or authorized to act on his/her behalf.
- 26) "Director of Economic and Community Development" means the Director of Economic and Community Development for the City and any one acting or authorized to act on his/her behalf.
- 27) "Director of Finance" means the Director of Finance for the City and any one acting or authorized to act on his/her behalf.
- 28) "Driver" means a Person who drives or is in actual physical control of a Vehicle and includes any body corporate in respect of Vehicles driven by its Officers, employees, or agents in the course of their employment, and the expression "Driver" and "driving" have a corresponding meaning.
- 29) "Driveway" means the same as "Approach".
- 30) "Emergency Vehicle" means
- i) a vehicle used by a police force,
  - ii) a vehicle used by a fire department,
  - iii) a vehicle used by an ambulance service,
  - iv) an authorized emergency vehicle,
  - v) a vehicle used to respond to emergencies and operated under the authority of a government emergency organization,
  - vi) a vehicle used for the purpose of maintaining a public utility and designated as an emergency vehicle by the Traffic Authority, or
  - vii) a vehicle not ordinarily used for emergency purposes that is operated by a volunteer, part-time or on-call firefighter or emergency medical responder for the purpose of responding to a fire, medical or other emergency.
- 31) "Encroachment" means any projection of a fence, wall, or other fixture, whether authorized or not, onto an adjacent Street.
- 32) "Fire Chief" means the Fire Chief for the City and any one acting or authorized to act on his/her behalf.
- 33) "Fire Department" means the Fire Department for the City.
- 34) "Fire Lane" is a Traffic Lane reserved primarily for use by Emergency Vehicles and so designated by Traffic Control Devices.
- 35) "Holiday" or "Public Holiday" means any Public Holiday proclaimed by Canada, the Province of Manitoba or the City.
- 36) "Horse" includes mule, ox or other beast of burden.
- 37) "Intersection" means the area embraced within the straight production of the lateral boundary lines of two or more Streets that join one another at an angle, whether or not such Street crosses the other.
-

- 38) "Lane" means a Street which is not numbered, named or otherwise designated.
- 39) "Loading Zone" means a designated portion of a Street adjacent to the Curb or road edge, reserved for the exclusive use of Vehicles, including taxicabs, during the loading or unloading of passengers or goods.
- 40) "Manager of Administration" means the Manager of Administration for the City and any one acting or authorized to act on his/her behalf.
- 41) "Manager of Public Works" means the Manager of the Public Works Division of the Operations Department of the City and any one acting or authorized to act on his/her behalf.
- 42) "Mayor" means the duly elected Mayor of the City, or in his absence, the Deputy Mayor, and in the absence of the Deputy Mayor, means the Acting Deputy Mayor.
- 43) "Median" means that portion of a divided Street separating the travelled ways for traffic in opposite directions.
- 44) "Motor Vehicle" means a Vehicle not run upon rails that is designed to be self-propelled, including motorcycles, mopeds, snowmobiles and off-road Vehicles, but excluding farm tractors and self-propelled implements of husbandry.
- 45) "Motorized Mobility Aid" means a device which is specifically manufactured or modified for operation by a physically disabled Person and which has:
- i) a maximum speed capability of not more than 15 kilometres per hour;
  - ii) maximum width of not more than 81 centimetres, and
  - iii) a maximum mass of not more than 226 kilograms, and includes a motorized wheelchair.
- 46) "Off Street Parking Area" means a parking area owned or operated by the City.
- 47) "Officer" means a peace Officer, police Officer, or any member of the RCMP, or such other Person authorized to act by the Detachment Commander or by the City to enforce this By-Law, and includes employees of a company or of the City that have been assigned responsibility by the City for enforcing this By-Law.
- 48) "Parade" means any procession or body of Pedestrians, excepting members of Her Majesty's Armed Forces, standing, marching or walking anywhere on a Roadway, or any group of Vehicles, except a funeral or wedding procession or Vehicles of Her Majesty's Armed Forces, standing or moving anywhere on a Street and shall include all animal drawn Vehicles used for the conveyance of one or more Persons.
- 49) "Park" means to Stand a Vehicle whether occupied or not, except when it is caused to Stand temporarily for the purpose of, and while actually engaged in, loading or unloading, or in obedience to an Officer or a Traffic Control Device, and "Parking" has a corresponding meaning.
- 50) "Parking Lane" means an auxiliary Traffic Lane primarily or exclusively for the parking of Vehicles and shall be part of a Roadway as defined hereinafter.
- 51) "Parking Meter" means a mechanical appliance designed for the purpose of automatically gauging and indicating the time within which a Vehicle is, or may be, parked in a metered space and installed thereat pursuant to this by-law.
-

- 52) "Parking Stall" means a space intended for the parking of a single Vehicle in an off-Street Parking area or in a parking lot located on Private Property designated by lines painted on the surface of the parking area or by some other means.
- 53) "Pedestrian" means a Person afoot, or a Person in a wheelchair or a child's carriage or physically disabled Person operating a motorized mobility-aid.
- 54) "Person" means any individual and includes corporation, firm, partnership and association or company and utilities.
- 55) "Physically Disabled Parking Authorization" means a decal, placard, or permit issued to a Person or organization by the Province of Manitoba or its delegate under Section 124.3 of the Act.
- 56) "Police Service" means the Royal Canadian Mounted Police.
- 57) "Private Property" means any property other than a 'Street' or an 'Off Street Parking Area' as defined elsewhere herein.
- 58) "Provincial Highway", for the purpose of this by-law, means any provincial trunk highway or provincial road or portion thereof within the City for which the Minister of Highways and Transportation of the Province of Manitoba is designated as the Traffic Authority, and for which the provisions of this by-law shall apply.
- 59) "Public Walkway" means a path or Lane intended for the use of Pedestrians only and located other than within a Street right-of-way.
- 60) "Roadway" means the portion of a Street that is improved, designed or ordinarily used for vehicular traffic and includes that portion thereof that, but for the presence of a safety zone, would be ordinarily so used and may contain more than one Traffic Lane but does not include the shoulder; and where a Street includes two or more separate Roadways, the term "Roadway" refers to any one Roadway separately and not all of the Roadways collectively.
- 61) "RTAC Truck Route" means a Truck Route designated by the Province of Manitoba for use by RTAC Vehicles.
- 62) "RTAC Vehicle" means a Vehicle which conforms to the criteria set out in Manitoba Regulation 575/88 and which displays, in a conspicuous place on both sides of the semi-trailer or full Trailer near the front of the Vehicle, the symbol for an RTAC Vehicle, in the form of a decal, as supplied by the Minister.
- 63) "Sandwich Board Sign" means an advertising self-standing sign comprised of two boards that are connected and support each other and is not a structure.
- 64) "School Bus" means a vehicle that is designed and classified by the manufacturer as a school bus and used for the purpose of transporting pupils and other authorized persons to or from school or to or from approved school-related activities.
- 65) "Sidewalk" means that portion of a Street between the Curb or the edge of a Roadway and the adjacent property line that is improved or any other portion of a Street improved and contained within a raised Curb intended for the use of Pedestrians.
- 66) "Sidewalk Crossing" means the same as "Approach".
-



- 67) "Sign" means any writing (including letter, word or numeral), pictorial representation (including illustration or decoration), emblem (including device, symbol or trademark), Banner, pennant or any other figure of similar character which:
- i) is a Structure or any part thereof, or is attached to, painted on or in any other manner represented on or in a building or other Structure; and
  - ii) is used to identify, direct attention to, or advertise;
- but does not include a Sandwich Board Sign.
- 68) "Skateboard" means any platform or similar object suspended over two or more wheels and designed to be propelled by human power, the wheels attached to which are no larger than 150 millimetres in diameter.
- 69) "Special Parking Permit" means a permit issued to residents in certain areas of the City, subject to conditions as set out in Section 46.
- 70) "Stand", as applied to a Vehicle, whether occupied or not, means
- i) when required, to cause the Vehicle to remain motionless in one place, and
  - ii) when prohibited, to cause the Vehicle to remain motionless in one place,
- except when necessary to avoid conflict with other traffic or in compliance with the directions of an Officer or a Traffic Control Device, and "STANDING" has a corresponding meaning.
- 71) "Stop", as applied to a Vehicle whether occupied or not, means
- i) when required, to cause the Vehicle to cease to move, and
  - ii) when prohibited, to cause the Vehicle to cease to move,
- except when necessary to avoid conflict with other traffic or in compliance with the directions of an Officer or a Traffic Control Device, and "STOPPING" has a corresponding meaning.
- 72) "Street" means any public right-of-way, including a highway or a Provincial Highway, providing primary access to abutting property, used as a public thoroughfare for Vehicles and Pedestrians including Streets under construction or repair, and where the context so requires, includes the whole of the area between the boundaries of the Streets as recorded in the Land Titles Office and includes all Lanes and Alleys.
- 73) "Structure" means anything constructed or erected with a fixed location on or below the ground, or attached to something having a fixed location on the ground and, without affecting the generality of the above, shall include such things as buildings, walls, paved portions of Roadways and Sidewalks, Utility housing, buried wires and cables, Utility poles, Utility duct lines, sewers, watermains, and, as well, the appurtenant fixtures thereof, Parking Meters and posts, fences, projecting signs, signs, billboards, poster panels, light standards, chutes, areaways, Bus shelters, Bus benches, vending machines and similar items.
- 74) "TAC" means the Transportation Association of Canada which is an interprovincial traffic standardization committee.
- 75) "Traffic Authority" means the Council of the City.
- 76) "Traffic Citation" means a Summons and/or Information Offence Notice and is the form issued in relation to violation of parking offences.
-

- 77) "Traffic Control Device" means a sign, signal, light, Pedestrian corridor, school corridor, marking or device, not inconsistent with The Act, placed or erected by the Traffic Authority for the purpose of regulating, warning or guiding traffic, but does not include a parking meter.
- 78) "Traffic Control Light" means the light shown by a Traffic Control Signal.
- 79) "Traffic Control Signal" means a Traffic Control Device, whether manually, electrically, or mechanically operated, by which, when operating, traffic is directed to Stop and to proceed.
- 80) "Traffic Lane" means a strip of Roadway intended to accommodate a single line of moving Vehicles.
- 81) "Trailer" means a Vehicle designed for carrying chattels, and for being towed by a Motor Vehicle or other Vehicle.
- 82) "Truck", means a Motor Vehicle or semi-trailer Truck that is not a delivery car and that is constructed or adapted to carry goods, wares, and merchandise, freight or commodities, but not passengers or luggage.
- 83) "Truck Route" means the route of travel prescribed by Schedule "C" hereto for heavy Vehicle traffic and may include RTAC Truck Routes.
- 84) "Truck Tractor" means a Motor Vehicle designed and used primarily for towing other Vehicles, and not so constructed as to carry a load other than the Driver thereof and a part of the weight of any Vehicle so towed including the load thereon.
- 85) "UTCDFC" means Uniform Traffic Control Devices for Canada Manual.
- 86) "Utility" means any corporation, company, City department, or other legal entity established for the purpose of and engaged in the supplying of a service to the community at large through the distribution or collection of electrical energy, steam, gas, water, wastewater, solid waste, refuse, or the supply of communications, and signal services.
- 87) "Vehicle", including Motor Vehicle, means a device, in, upon, or by which a Person or thing is or may be transported or drawn upon a Street and includes
- i) an implement of husbandry that is not a Motor Vehicle,
  - ii) a Bicycle,
- but does not include
- iii) a device designed to be moved by human power other than a Bicycle or used exclusively upon stationary rails or tracks,
  - iv) a Motorized Mobility Aid.
- Reference to a Vehicle in provisions respecting the stopping, standing, or parking of Vehicles shall be deemed to include the whole Vehicle or any portion thereof.
- 88) "Walkway" means a public right-of-way to be used solely by Pedestrians and non-motorized Vehicles and does not include a Street or Lane.
- 89) "Written Permission" means, where no official form is supplied, a letter of authorization issued by a designated City official.
-

**7. APPLICATION**

- a) This by-law shall apply to the entire City with the exception of Provincial Trunk Highway #1 and that portion of Provincial Trunk Highway No. 1A west of 21<sup>st</sup> Street West as shown on Schedule "F".
- b) Weight restrictions contained in this by-law shall apply to all Streets in the City with the exception of those Streets set out on Schedule "F" hereto which shall be governed by weight restrictions contained in the Act or Regulations thereto.
- c) The UTCDFC is hereby adopted as the standard for all traffic controls within the City. If no standard for a Traffic Control Device is set out in the UTCDFC then the City shall apply to the Board for approval of such proposed Traffic Control Device.
- d) All existing Traffic Control Devices, whether set out in the Traffic Sign Directory or not, are hereby acknowledged and the locations of and information set out thereon are approved.

## **II TRAFFIC CONTROL AND TRAFFIC CONTROL DEVICES**

### **8. TRAFFIC AUTHORITY**

- a) Until this by-law is amended to state otherwise, the City Council shall be the Traffic Authority for all Streets within the City, including private properties where the intention to have this by-law apply to such property is shown by the posting of a notice thereon but excepting all other Private Property and those portions of Provincial Trunk Highways and Provincial Roads outside the jurisdiction of the City.
- b) The Traffic Authority shall exercise all the powers authorized by The Municipal Act, The Highway Traffic Act and The Dangerous Goods Handling and Transportation Act and all powers as designated in this by-law.
- c) The Traffic Authority may, from time to time, enter into agreements with other parties ("Private Parties"), providing for the enforcement of some or all of the provisions of this By-Law within specific geographical areas by the Private Parties, their employees or agents, subject only to the limitation that the Private Parties may only exercise those powers of an Officer which are set out in Section 53.
- d) The Traffic Authority shall meet and maintain minutes of all proceedings and the minutes shall be retained in the Office of the Manager of Administration.
- e) The location of all Traffic Control Devices other than those Traffic Control Devices located on Provincial Highways and Designated Highways by the Province of Manitoba Department of Highways shall be approved by the Traffic Authority.
- f) Provincial Trunk Highways and Provincial Roads within the City are divided into three categories; those exempt from the provisions of this by-law as referred to in subsection 7.a), those within the jurisdiction of the Province [Provincial Highways as defined in paragraph 6.b)58) and those within the jurisdiction of the City [Designated Highways as defined in paragraph 6.b)23) ]. The location of all categories are set out on Schedule "F" hereto.
- g) The location of Traffic Control Devices by the City on Designated Highways shall be approved by the Minister of Highways and Transportation or his designate.
- h) The location of Traffic Control Devices on Provincial Highways is not subject to this by-law.
- i) Notwithstanding the approval of the location of existing Traffic Control Devices by the passage of this By-law, and subject to the authority of the Board, the Traffic Authority may, by resolution during a duly constituted meeting of City Council, authorize any locational changes to any or all Traffic Control Devices within the control of the Traffic Authority as the Traffic Authority determines to be reasonable.

### **9. TRAFFIC CONTROL DEVICES**

- a) The location of all Traffic Control Devices shall be recorded in a Traffic Sign Directory to be maintained by the Director of Operations.
  - b) With the exception of temporary Traffic Control Devices referred to in Section 10, no Traffic Control Device shall be installed on a Street within the jurisdiction of the City without the prior approval of the Traffic Authority as evidenced by a resolution that has been passed by majority vote during a duly constituted City Council meeting.
  - c) Subsection b) above shall not apply to the Department of Highways, its agents or employees with respect to Provincial Highways.
-

- d) Those private properties with an internal Street system shall have installed, at the owner's expense, Traffic Control Devices at each point where the internal Street system interconnects with a City Street.
- e) The placement of any Traffic Control Device in contravention of this by-law by any Person, shall be an offence and such Traffic Control Device(s) shall be removed.

#### 10. TEMPORARY TRAFFIC CONTROL DEVICES

- a) The Detachment Commander or the Director shall place and maintain, or cause to be placed and maintained, temporary Traffic Control Devices for the purpose of prohibiting or regulating traffic where a Parade, Street construction, repair, painting, snow removal or emergency occurs.
- b) The Minister of Highways and Transportation, or his designate shall have the same authority as the Detachment Commander or Director as referred to in subsection a) above over Provincial Highways and Designated Highways.
- c) When workmen of Electric, Telephone, or Gas Utilities, or Private Firms are authorized, in accordance with Sections 17 and/or 61 to do work in, upon, or under any Roadway within the jurisdiction of the City, they shall, at their own expense, supply and place Traffic Control Devices in the manner approved by the Director. Such signs shall be cleaned, maintained, repaired and replaced as often as is necessary to provide protection to the public to the satisfaction of the Director.
- d) **Advertising**
  - 1) The announcement of temporary parking restrictions imposed under subsection a) above may be printed in the local newspaper and announced over the broadcast media at least six hours before the parking prohibition comes into effect, if feasible, and/or portable Traffic Control Devices may be placed on affected Streets by 17:00 hours on the previous day and at least twelve hours prior to the parking prohibition taking effect. Such temporary Traffic Control Devices shall be placed a minimum of four per block (two per side of each block).
  - 2) Notwithstanding paragraph 1) above, where an emergency situation occurs the immediate placement of portable Traffic Control Devices shall be deemed sufficient notice.
  - 3) Where a situation occurs which prevents proper notification and signage of Streets as outlined in paragraph 1) above, the City may have Vehicles which are lawfully parked within the affected area towed to the nearest available parking area. The Person responsible for ordering the Vehicle to be towed shall immediately notify the Detachment Commander of such action stating where the Vehicle was removed from, where it was relocated to, the reason for such relocation, and a description of the Vehicle involved. The Detachment Commander shall then take all reasonable steps to notify the owner of such action and advise where the Vehicle was relocated to. Under such circumstances, the City shall be responsible for all related towing charges and any Traffic Citations issued as a result of such emergency parking prohibition. Vehicles which are unlawfully parked may be Cited and/or towed from the area at the owner's expense. The towing of any unlawfully parked Vehicle pursuant to this paragraph shall be subject to the provisions of subsections 55.
  - 4) Where any temporary parking restriction is announced and affected Streets signed in accordance with paragraph 1), any Vehicle parked within the affected area at or following the time such temporary parking restrictions take effect may be Cited and/or towed from the area at the owner's expense. The towing of any Vehicle pursuant to this paragraph shall be subject to the provisions of Section 55.

### III GENERAL USE PROVISIONS

#### 11. VEHICLES IN FUNERAL PROCESSIONS

The Driver of every Vehicle in a funeral procession, indicated as such by the headlamps and four-way flashers of all Motor Vehicles therein being lighted, upon approaching a Traffic Control Signal showing a red Traffic Control Light, or a Stop Sign shall cause the Vehicle to slow down or Stop as may be necessary for safety, but may then proceed cautiously past the Traffic Control Signal or Stop sign, and the Driver of each of the Vehicles in the procession shall have the right of way over all other Vehicles upon the Street at the Intersection or place where the signal or Stop Sign is situated. In the event any Vehicle is separated from the procession the four-way flashers should be disengaged and normal driving practices resumed unless and until such Vehicle is again in direct line with the procession at which time the four-way flashers should again be lighted. The lead Vehicle in a procession shall use flashing yellow lights.

#### 12. HORSES AND DOMESTIC ANIMALS

- a) It shall be an offence for any Person to ride, lead or drive a Horse on, across, or along any Street, Boulevard or Sidewalk unless Written Permission to do so has first been obtained from the Fire Chief. On Roadways situated in undeveloped areas within the City, and where in the opinion of an Officer such action does not constitute a hazard to Pedestrian or vehicular traffic, the Officer, in his sole discretion, may choose not to compel compliance with this Section.
- b) Notwithstanding subsection a), any Person who takes part in a Parade authorized in accordance with Section 27, may ride or lead a Horse along the Parade route.
- c) Any person who brings a domestic animal onto any Street, Boulevard or Sidewalk shall be solely responsible to keep it under control and to avoid it causing injury to any person or property. Such person shall immediately clean up and remove any fecal or other waste material deposited by his/her animal.
- d) Any person who brings a horse or horses and sleigh or wagon onto any Street, Boulevard or Sidewalk shall be responsible to ensure adequate safety measures are taken, in accordance with provisions in The Highway Traffic Act", as follows:
  - 1) Where a vehicle is towed on the highway at a time when lamps on vehicles are required to be lighted, if it is being towed by an animal and has a width in excess of 2.05 metres (6.7 feet) at any part, it shall carry at least four clearance lamps OR reflectors in a conspicuous position, one of which shall be placed at each side of the front of the vehicle and shall cast or reflect only a green or amber light forward, and one of which shall be placed on each side on the back of the vehicle, and shall cast or reflect only a red light rearwards. At least one of the reflectors shall be placed on the part of the vehicle that projects farthest to the right, and at least one shall be placed on the part of the vehicle that projects farthest to the left. [Sec. 35 HTA]
  - 2) The driver of a vehicle who is proceeding at less than the normal speed of traffic at the time shall drive in the right hand lane then available for traffic, or as close as practicable to the right-hand curb or edge of the roadway. [Sec. 109(2) HTA]
  - 3) No person shall drive or operate on a highway any vehicle traveling at a speed less than 40 kph unless there is displayed on the back thereof a reflectorized warning device of a type approved by the traffic board indicating that it is a slow moving vehicle, or the vehicle is permitted to be equipped with, and is equipped with, a lamp that emits an amber light and that light intermittently flashes, and the lamp is in operation and the light therefrom is visible from the rear. [Sec. 178(1) HTA]

- 4) Where a vehicle is towed by an animal, reflectors shall be placed on the animal's harness in such a manner as to be seen by oncoming traffic.
- e) Subject to subsections a) and b), every Person riding, leading or driving a Horse shall be subject to all of the provisions of this by-law relating to the operation of Vehicles.

**13. BICYCLES**

- a) Every Person riding a Bicycle shall be subject to all of the provisions of this by-law relating to the operation of Vehicles.
- b) The erection and use of Bicycle parking racks on the Sidewalk or Boulevard portion of a Street may be authorized by the Director.
- c) The penalty for violation of the restrictions set out in this Section shall be as set out in Section 65.

**14. PEDESTRIAN'S RIGHTS AND DUTIES**

- a) Where an Officer has reasonable and probable grounds for believing that a Pedestrian has committed or is committing a breach of those provisions of this By-law that relate to Pedestrian traffic, he may require the Pedestrian to stop and there and then to state correctly his/her name and address, and to prove his/her identity to the satisfaction of the Officer and,
- b) If a Pedestrian refuses or fails to Stop and state correctly his/her name and address or so prove his/her identity when so required, the Officer may arrest him without warrant.

**15. SOLICITING RIDES ON A STREET**

It shall be an offence for any person to stand on a street for the purpose of soliciting a ride from the driver of a vehicle except when hailing a taxicab.

**16. DEVICE RESTRICTIONS ON A STREET**

It shall be an offence for any Person to ride upon or use any cart, coaster, Skateboard, roller skates, roller blades, sleigh, skis, snowboard, skates, toboggan, toy vehicles, or similar device on a Street where it interferes with Pedestrian or vehicular traffic.

## **IV GENERAL STREET REGULATIONS**

### **17. WORKING IN OR UPON ANY ROADWAY**

- a) Subject to the provisions of subsection b) hereof, in the interest of public safety, any Person desiring to work in or upon any Roadway within the jurisdiction of the City must provide 48 hours notice to the Director.
- b) **Written Permission**
  - 1) No work shall be commenced in or upon any Roadway without prior Written Permission of the Director.
  - 2) The Director shall have the authority to restrict the hours during which such work shall be conducted on Arterial and Collector Roadways so as to, in his opinion, minimize the disruption of traffic.
- c) Subsections a) and b) above shall not apply to the Department of Highways, its agents or employees with respect to Provincial Highways providing twelve (12) hours notice, or any other time as the Director shall deem sufficient, of any work which would render the Street impassable to Emergency Vehicles is given to the Detachment Commander and Fire Chief to ensure there is no disruption to emergency services.

### **18. DAMAGING STRUCTURES IN STREETS**

- a) It shall be an offence for any Person to damage any Structure in, upon or under any Street.
- b) It shall be an offence for any Person, other than a duly authorized employee or agent of the owner of the Structure, to climb, break, cut, willfully destroy, tear down, paint or deface or interfere with any Utility housing, or any light, power, telegraph, telephone, police or fire alarm or signal pole or tower or any other pole, tower, wire or cable or any guy wire or other support or accessory thereto.

### **19. NUISANCE AND DANGEROUS CONDITIONS**

- a) It shall be an offence for any Person to place any Structure, or other obstruction in or upon any Street and any Person who has placed any such building, Structure or obstruction in or upon any such land previous to the passing of this By-law shall remove such building, Structure or other obstruction after being given a reasonable time to do so by the City, subject to existing or future Encroachment agreements as authorized by the Traffic Authority, and in the event that an emergency arises requiring such building, Structure or other obstruction to be moved forthwith the Detachment Commander shall direct that such building, Structure or obstruction be removed and the cost of such removal shall become a charge against the owner thereof and may be assessed and collected by the City in the same manner as ordinary municipal taxes. This restriction shall not apply to approved Traffic Control Devices or other approved Structures installed or erected in accordance with the provisions of this by-law or the Act.
  - b) It shall be an offence for any Person to throw, pile, deposit, or leave any articles, merchandise, water or material of any kind in or upon any Street or Boulevard or to carry out or permit any action causing or resulting in the creation of a nuisance or dangerous condition in or on any Street or Boulevard, but this section shall not be construed to interfere with the reasonable use of a portion of a Street or Boulevard for a reasonable time during the taking in or delivery of goods, wares, or merchandise as provided for herein, or as may be required under the City's Solid Waste By-law, as amended.
  - c) It shall be an offence for any Person other than a Utility to place or leave on or across any part of a Street, an unattended electrical cord or cable that is intended to be used for transmitting electrical energy from Private Property to or across a Street unless the cord has been raised a minimum of 2.2 metres above the grade level and extends across only a Sidewalk and/or a Boulevard and the installation is temporary.
-



## 20. SPECIAL EVENTS

- a) The Manager of Administration may, at his/her discretion, authorize the temporary use of Streets and/or Sidewalks for special events such as Sidewalk sales, block parties and other like events.
- b) Any Person desiring to hold such an event as referred to in subsection a) above, shall make application to the Manager of Administration for permission for a Special Event. Authorization for such event shall be subject to:
  - 1) payment of an application fee in the amount set out in the Fees and Charges By-Law;
  - 2) compliance with all conditions and regulations imposed for said Special Event; and
  - 3) payment of any additional fees respecting such authorization as determined in the sole discretion of the Traffic Authority as same may pertain to each individual application.

## 21. REMEDIAL ACTION

The Director or Detachment Commander may abate, remedy, remove or repair any nuisance or dangerous condition in a Street or remove any unauthorized Structure, pole, post or material in a Street or erect and maintain any barricades or other protective device in a Street for the purpose of preventing a breach of this by-law or to prevent a hazardous condition in a Street resulting from an action contrary to this by-law or a failure to act in accordance with this by-law. The cost of any remedial actions undertaken in accordance with the above authority may be charged to the Person responsible for the contravention of this by-law and collected in the same manner as ordinary municipal taxes.

## 22. SNOW, ICE OR DIRT – BUSINESS PREMISES

Every occupant, and in case there is no occupant, the owner or Person having charge or care of every business premises (hereinafter in this clause called the premises) fronting or abutting on any Street or public place within the City shall:

- a) before 10:00 hours each day, following every fall of snow, hail or rain which shall have frozen on the Sidewalk, or after a fall of snow or ice off any building, cause the same to be removed entirely off the Sidewalk fronting or abutting the premises and in the event the ice or snow shall be so frozen that removal would damage the Sidewalks, every such Person shall strew the Sidewalk with salt, sand or other like substances.
- b) before 10:00 hours each day, remove from the Sidewalk fronting or abutting the premises all dirt and other obstructions.
- c) if said snow, ice, dirt or other obstruction has not been removed as set out in subsections a) and b), the Manager of Public Works of the City of Portage la Prairie may cause such ice, dirt or obstruction to be removed at the expense of the owner in default and shall file with the Director of Finance of the City of Portage la Prairie, at the end of each month, a statement showing the sums expended by the City for such work and the Director of Finance shall thereupon cause the sums so expended to be charged against each respective lot or parcel of land on the tax roll next prepared thereafter, and the same may be recovered by the City in the same manner as other municipal taxes.

**23. SNOW OR ICE – ALL PROPERTIES**

- a) It shall be an offence for any Person to remove from any Private Property, public property, Street, Boulevard or Sidewalk any snow or ice and deposit same on any Street, Boulevard, parking lot, public place, or Sidewalk in such a manner that could negatively impact drainage, or create a hazardous condition for either vehicular or Pedestrian traffic, or otherwise impede the snow removal efforts of the City or Manitoba Infrastructure and Transportation. [*AM by By-Law 10-8474 – Res #73/10*]
- b) Subsection a) shall not apply to the City, the Department of Highways, their agents or employees who are actively engaged in snow removal from Streets, Boulevards or Sidewalks in the course of their employment or fulfillment of contract.
- c) Any Person occupying a property where a building abuts the property line adjacent to a Street in such a manner that snow cannot be cleared onto the property may pile the snow at the Curb line of the Street in such a manner that both vehicular and Pedestrian traffic can pass only if a hazardous condition is not created when snow is piled in this manner.

**~~24. SANDWICH BOARD SIGNS [DEL. by By-Law 12-8559]~~**

~~Sandwich Board Signs may be placed on Sidewalks in the City as follows:~~

~~signs shall be permitted on sidewalks only, adjacent to the curb.  
at an intersecting street, signs shall be located a minimum of five (5) meters from the intersection.  
the dimensions of the sign shall be not greater than 750 mm in width and 1200 mm in height.  
signs shall not be located in such a manner as to interfere with the movement of pedestrian traffic.  
signs shall be weighted at the bottom to prevent the wind from blowing them over.  
signs shall not be secured to parking meter posts, or interfere with a motorist's access to the parking meter.  
signs shall not interfere with the visibility of any traffic regulatory sign.  
signs may be constructed of wood, metal or plastic.  
signs shall be maintained to an acceptable standard at all times.~~

~~The Director or Fire Chief may remove any non conforming Sandwich Board Signs.~~

## **V GENERAL TRAFFIC REGULATIONS**

### **25. SPEED IN CITY**

It shall be an offence for any person in control of a vehicle to travel on any street at a greater speed than 50 kilometers per hour, unless the speed is indicated otherwise by an appropriate traffic control device. [*Speed Limit Zones other than 50km/hr are shown on Schedule "I" – AM 04-8237*]

### **26. AVOIDING CONFLICT WITH FIRE APPARATUS**

- a) It shall be an offence for any Person, except by direction of the Fire Chief to drive or bring any Vehicle within 30 metres of any fire apparatus on route to or at the scene of a fire.
- b) The City may have any Vehicle which is lawfully parked in or upon any Roadway or Lane at the scene of any fires in the City block in which such Roadway or Lane is situated towed to the nearest available parking area. The Person responsible for ordering the Vehicle to be towed shall immediately notify the Detachment Commander of such action stating where the Vehicle was removed from, where it was relocated to, the reason for such relocation, and a description of the Vehicle involved. The Detachment Commander shall then take all reasonable steps to notify the owner of such action and advise where the Vehicle was relocated to. Under such circumstances, the City shall be responsible for all related towing charges. Vehicles which are unlawfully parked shall be removed at the owner's expense in accordance with Section 55 herein.

### **27. PARADES**

- a) It shall be an offence for any Person to hold, take part in or be a member of a Parade unless:
  - 1) the Parade is under the direction or control of a Parade Marshall or Organizer, and
  - 2) such Parade Marshall or Organizer shall obtain a permit, as shown in Schedule G, from the Fire Chief.
- b) A Person desiring to hold a Parade shall apply to the Fire Chief in writing for a permit not less than forty-eight (48) hours before the time set for the commencement of the Parade, and shall, when making his/her request, supply all such information as the Fire Chief may require and pay any applicable fee as detailed in the City's Fees and Charges By-Law. The Fire Chief shall forthwith provide the Detachment Commander with a copy of all Parade permits issued.
- c) **Driving Through Parades**  
Unless so directed by an Officer, it shall be an offence for any Person, other than the operator of an Emergency Vehicle, to drive a Vehicle through a Parade.

### **28. DRIVING THROUGH BARRICADED STREETS**

Unless otherwise directed by an Officer or Traffic Control Device, it shall be an offence for any Person to drive a Vehicle, except Vehicles engaged in related construction, on any portion of a Street roped, barricaded or otherwise indicated by the proper authority as being closed to traffic temporarily or permanently.

### **29. VEHICLES NOT TO DAMAGE ROADWAYS**

It shall be an offence for any Vehicle having corrugated or flanged metal wheels, or any device which is dragged or hauled without wheels, or any thing so constructed or loaded in such a manner as to damage the Roadway, to be driven or hauled along, upon or across any of the Roadways in the City; provided that should it

be unavoidable to operate over any of the Roadways, the owner or operator of the Vehicle shall first obtain Written Permission from the Director and shall be responsible for any damage done to the pavement or other surface of any Roadway. Such repairs will be carried out by the City and the costs paid by the owner and/or operator of the Vehicle which damaged the Roadway.

**30. VEHICLES – NO LOUD SPEAKER**

It shall be an offence for any Person to use a loud speaker on or from any Vehicle on the Roadway unless authorized and directed by the Fire Chief.

**31. "U"-TURNS RESTRICTED**

a) It shall be an offence for any Driver to turn a Vehicle so as to proceed in the opposite direction at or in a place where:

- 1) a Traffic Control Device prohibits making a U-turn; or
- 2) there is a signalized Intersection; or
- 3) there is a 3-way or 4-way Stop; or
- 4) such "U-turn" is otherwise permitted, where to do so would interfere with other traffic or Pedestrians; or
- 5) at any place on Saskatchewan Avenue between 5<sup>th</sup> Street E. and 8<sup>th</sup> Street W., both inclusive.

b) Notwithstanding item a) above, "u-turns" are permitted at intersections only.

**32. ONE-WAY STREETS**

Drivers of Vehicles on one-way Roadways as designated by Traffic Control Devices shall drive only in the direction indicated by a Traffic Control Device or devices located on, or adjacent to, the said Roadway.

Schedule "J" provides a listing of One-Way Streets and Lanes/Alleys within the City of Portage la Prairie. [AM by By-Law 07-8359]

a) **ONE-WAY STREETS – SPECIAL EVENTS**

The Portage Regional Recreation Authority will have the authority to establish traffic control following special events on the Island by including providing one way traffic flow northward over Royal Road Bridge as well as providing appropriate personnel to control such traffic exiting the Island. [AM By-Law 10-8498 – Res 343/10]

**33. BLOCKING INTERSECTION**

Notwithstanding any Traffic Control Device indication to proceed, it shall be an offence for any Driver of a Vehicle to enter an Intersection unless there is sufficient space on the other side of the Intersection to accommodate the Vehicle without obstructing the passage of Pedestrians or other traffic.

**34. LOADING AND UNLOADING VEHICLES**

a) **Effective Hours of Loading Zones**

Loading Zone Parking Restrictions shall be in force between 08:00 hours and 18:00 hours from Monday through Saturday inclusive except where otherwise posted.

b) **Use of Loading Zones**

It shall be an offence for a Person to:

- 1) cause a Vehicle to occupy a Loading Zone, as identified by a Traffic Control Device, for a continuous period in excess of fifteen (15) minutes;
- 2) cause a Vehicle to occupy a Loading Zone for a purpose other than the loading or unloading of passengers or goods; or
- 3) cause a Vehicle to occupy a Loading Zone designated as a "Passengers Only" Loading Zone for any purpose other than the loading or unloading of passengers and their luggage.

**35. DELIVERIES TO BE MADE IN LANE**

Notwithstanding any other provision of this By-law, where there is a Lane adjacent to a commercial property, a Person operating a Vehicle to make a delivery or collection from such property shall use the Lane if Lane side delivery facilities are available. It shall be an offence for a Person to permit a Vehicle to occupy a Lane continuously for a period in excess of fifteen (15) minutes for any purpose if less than 2.4 metres is left for the passage of other vehicular traffic through the lane.

**36. VEHICLES BACKED TO CURB**

On Roadways which are Curbed, it shall be an offence for any Driver of a Vehicle actually engaged in loading or unloading to park or Stop the Vehicle backed up to the Curb. At all other locations it shall be an offence for any Driver of such a Vehicle to park or Stop the Vehicle in any manner other than parallel to the Roadway unless the Vehicle is completely clear of the marked lanes of such Roadway and does not interfere with either Pedestrian or vehicular traffic. Such Person shall promptly remove such Vehicle, or promptly move it so as to be properly parked, when loading or unloading has been completed.

**37. PARKING OF MOVING VANS, OR OTHER SIMILAR MOTOR VEHICLE INTENDED FOR SUCH PURPOSE, AND LOADS OF MATERIALS**

- a) Regardless of the restriction on Curbside Parking, a Driver of a moving van or other similar Motor Vehicle intended for such purpose, may park for the immediate purpose of loading or unloading household goods and furniture to a private residence or apartment, subject to Section 38.b), on any Street other than an Arterial Roadway or Collector Roadway.
- b) It shall be an offence for any Person to conduct the work of loading or unloading a moving van in such a way as to obstruct Vehicles and Pedestrians upon a Street.
- c) Except as provided in Subsection d) below, it shall be an offence for any Person to handle any load including construction and other material(s), machinery and equipment, to or from a Vehicle on a Roadway except when the Vehicle is standing or Stopped in the Parking Lane of a Street, or, if there is no Parking Lane, in the Lane closest to the property line of the Street, and any such work shall be done without interference to Pedestrian or vehicular traffic. If any load cannot be handled in compliance with this provision, Written Permission from the Director must be obtained prior to handling the load.
- d) Should the nature of the load be such that, in the opinion of the Director, the safety and convenience of the public requires more protection, the Director may, with or without application from an interested party, order in writing, all at the cost of the applicant or Person wishing to load or unload:
  - 1) which Street shall be used for the work,
  - 2) which portion of such Street may be temporarily closed,

- 3) the time or times when the work may be done,
- 4) the required degree of advance advertising, Traffic Control Devices, flagmen and special measures needed to protect the safety and convenience of the public,
- 5) the deposit or surety required to be placed with the City in advance, if any, to defray actual City costs including overhead charges.

e) **Offence**

When an order has been made pursuant to Subsection d) above with respect to any load, it shall be an offence for any Person to handle such load on any Street except in accordance with such order.

**38. STANDING FOR LOADING AND UNLOADING BUS PASSENGERS**

a) **Establishment of Bus Stops**

- 1) Bus Stops so designated by Traffic Control Devices for the loading and unloading of Bus passengers shall be at such locations as may, from time to time, be designated by the Traffic Authority.
- 2) Each Bus Stop shall be of such dimensions as the Traffic Authority shall deem, in each particular case, necessary.
- 3) Bus Stops adjacent to an Intersection shall be identified by a single Traffic Control Device at that end of the Bus Stop furthest from the Intersection while other Bus Stops shall be identified by two Traffic Control Devices located one at each end of the Bus Stop.

b) **Restricted Use of Bus Stops**

It shall be an offence for any Person to Stop or Stand or Park a Vehicle, other than a Bus, in a Bus Stop or Bus Lane. Vehicles in violation may be Cited and/or towed away in accordance with the provisions of this By-law.

*[FOR INFORMATION ONLY: Res.#282/01 authorized the creation of a bus stop at Portage ARC Industries at 1675 Saskatchewan Avenue West for the periods Monday to Friday, 8:30 a.m. to 9:15 a.m. and 3:30 p.m. to 4:00 p.m.]*

**39. TRANSPORTATION OF WASTES**

Solid wastes must be properly contained and secured to prevent loss of materials during transport. The transporter shall be responsible for the collection and disposal of any materials which have fallen from a transport vehicle. The transporter shall also be responsible for any damages caused by the loss of uncontained wastes while in transit.

## **VI STOPPING, STANDING AND PARKING**

### **40. METHOD OF STANDING OR PARKING OF VEHICLES**

Unless otherwise required by Traffic Control Devices or by other provisions of this By-law, it shall be an offence for any Person to Stop, Stand or Park a Vehicle, except an Emergency Vehicle, on any Roadway other than parallel with the Curb, headed in the direction of vehicular traffic movement in the adjacent Traffic Lane with the Curb-side wheels of the Vehicle or Bus within 45 centimeters of the Curb, and a clear space of 1 metre left ahead and behind. This provision shall not be enforced if:

- a) two Vehicles are parked less than 1 metre apart if both Vehicles have sufficient space separating them from any further Vehicles so as to be able to freely exit from the parking space; or
- b) snow has accumulated to such an extent that Vehicles cannot park adjacent to the Curb, in which case a Vehicle shall park within 45 centimetres of the snowbank so long as the Vehicle is Stopped or parked in compliance with Section 42 hereof.

### **41. ANGLE PARKING**

- a) It shall be an offence for any Person to park a Vehicle diagonally on any Roadway except where Traffic Control Devices indicate that a Vehicle may be so parked.
- b) Notwithstanding Subsection a), it shall be an offence for any Person to Park, Stand or Stop a Vehicle exceeding 6 metres in length diagonally at any time.

### **42. GENERAL STANDING AND PARKING PROHIBITIONS**

- a) Except when authorized by the Traffic Authority, no Person shall obstruct or encumber any Street or Sidewalk by placing thereon any goods, wares or merchandise or other articles, outside of any shop, warehouse, or other building, which shall project over any portion of the Sidewalk or Street beyond the line, or front, of such Person's property, but the provisions of this clause shall not be construed to interfere with the use of the portion of such Street or Sidewalk for a reasonable time during the taking in or delivering of goods, wares or merchandise.
- b) No Person, or Persons shall stand in groups, or sit, or lounge, on a Street or Sidewalk in such a manner as to cause, or to be likely to cause, any obstruction to the free use of said Street or Sidewalk by any other Person.
- c) No Person shall Park any Vehicle:
  - i) in a Lane, on a Sidewalk or on a Boulevard;
  - ii) on any Street for a period of time longer than seven (7) consecutive days;
  - iii) at the entrance to a Lane or to any Approach leading into public or private premises so as to obstruct the ingress or egress of Vehicles;
  - iv) within an Intersection, or within 3 meters of an Intersection;
  - v) within 3 metres of a fire hydrant or when the hydrant is not located at the Curb, within 3 metres of the point on the Curb nearest the hydrant;
  - vi) on a Crosswalk, or within 3 metres of the Approach side of a Crosswalk;
  - vii) on the Roadway side of a Vehicle Stopped or parked at the Curb of a Street;
  - viii) on a Roadway with the left side of the Vehicle to the Curb, except in a one-way street;
  - ix) upon any bridge, overpass or other elevated Structure;

- x) within 15 metres of any portion of a Street or Lane underneath a bridge, overpass or other elevated Structure.
  - xi) in any Off-Street Parking Area for a period of time longer than 48 consecutive hours. [*AM – By-Law 09-8436*]
- d) Except on those Streets and during those times shown on signs indicating that restricted parking is permitted, no Person shall park a Vehicle on any Street or portion of Street described in Schedule “D” hereto.

**43. PARKING OF LARGE TRUCKS, BUSES, TRAILERS AND RECREATIONAL VEHICLES (*AM By-Law 02-8151*)(*AM By-Law 05-8295*)**

- a) Notwithstanding any other provision contained in this by-law:
  - 1) No Driver of a Vehicle with a Trailer or semi-trailer attached shall park such a Vehicle between Fifth Street East and Eighth Street West, on Saskatchewan Avenue, between the hours of 08:00 hours and 23:00 hours on any day.
  - 2) No Person shall park or leave a semi-trailer detached from the Truck Tractor on any Street within the City, or on any City Parking lot.
  - 3) No Person shall Stop, Stand or Park a Truck rated of greater weight capacity than one ton, a Trailer (excluding a Recreational Trailer), or a Bus having a capacity for more than 20 passengers on any Street where Parking Meters are not installed, for more than one hour. (*AM By-Law 05-8295*)
  - 4) No person shall park or leave any recreational trailer, including a motor home, a bus which has been converted into a motor home, a fifth wheel whether or not it is connected to a motor vehicle, or any other recreational vehicle, on any street where parking meters are not installed for more than 48 hours. (*AM By-Law 02-8151*)
- b) No Person shall park a Vehicle on a Street, without permission of the Traffic Authority, when such Vehicle displays and/or advertises goods for sale.
- c) **Offence**  
It shall be an offence for any Person to park a Vehicle with a gross vehicle weight in excess of 5773 kg at any time on any Street in the City other than:
  - 1) on a Truck Route, or
  - 2) on Saskatchewan Avenue west from 8<sup>th</sup> Street West and Saskatchewan Avenue east from 5<sup>th</sup> Street East to City limits, when the Vehicle is engaged in loading or unloading pursuant to Section 37 hereof.

**44. EXEMPTIONS TO PARKING PROVISIONS**

The provisions of this by-law, relating to Stopping, Standing or Parking shall not apply to:

- a) Vehicles of the Police Service and/or the Fire Department while used in the course of duty (excepting paid breaks);
  - b) Vehicles of, or employed by, the City while in use in connection with work of necessity being done on or near a Street requiring them to Stop, Stand, or be parked in contravention of any such provisions;
  - c) other clearly marked City Vehicles parked at Parking Meters or time limited parking zones while the Drivers of the Vehicles are engaged in City business (excluding paid breaks);
-



- d) Vehicles of, or employed by, the Government of Manitoba, the Government of Canada, or a public Utility, if such Vehicles have the owner's name painted thereon, or can otherwise be identified as such, and are actually engaged in work of necessity on or near a Street requiring them to Stop or be parked in contravention of any such provisions;
- e) any other Vehicles identified by a valid Special Parking Permit issued by the Traffic Authority insofar as same is provided in accordance with the terms set out on the permit; or
- f) armoured Vehicles while used in the course of duty, providing a Driver remains in the Vehicle at all times, is prepared to move the Vehicle if required, and the Vehicle is not Parked or Stopped in such a manner as to constitute a hazard.

#### 45. **PARKING FOR DISABLED PERSONS**

- a) In this Section:
  - 1) "Designated Parking Space" means a space designated by signs or pavement markings as being for the sole use of Vehicles displaying a Physically Disabled Person's Parking Permit and that is located:
    - i) on a Street
    - ii) in a public parking lot or facility, or
    - iii) in a private parking lot or facility to which the public has access.
  - 2) "Physically Disabled Person's Parking Permit" means a valid Physically Disabled Person's Parking Permit issued under Section 123.3 of The Act.
- b) No Person shall Stop, Stand or Park a Motor Vehicle in a Designated Parking Space, or in a manner that makes a designated parking space inaccessible, unless the Vehicle displays a Physically Disabled Person's Parking Permit in accordance with The Highway Traffic Act and the regulations under that Act.
- c) When a valid Physically Disabled Person's Parking Permit is properly displayed in a Motor Vehicle, the driver of said Vehicle may park at a Parking Meter without depositing coin for a period not to exceed two (2) hours.

#### 46. **SPECIAL PARKING PERMITS AND SPECIAL PARKING ZONES**

##### a) **Special Parking Permits**

In this Section:

- 1) "Special Parking Permit" means a permit issued in accordance with Subsection 2).
- 2) The Traffic Authority may, at its discretion, designate special groups or categories of Vehicle operators and upon determination that an individual falls within such group or category, issue to that individual a special permit authorizing that individual, or such other individual operating a Vehicle on his/her behalf, a permit allowing parking according to the terms set out on the permit, notwithstanding other provisions of this By-law.
- 3) Such permits shall be attached to the permit holder's Vehicle.

##### b) **Special Parking Zones**

- 1) The penalty for violation of the parking restrictions as set out in this section shall be as set out in 64 of
-

this by-law.

- 2) The Traffic Authority may designate, at its discretion, special parking areas where parking shall be restricted, for example, to restrict parking to special classes of Vehicles such as Buses or to the residents of a specific area of the City.
- c) **Fee for Special Parking Permits**  
The fee for a Special Parking Permit shall be determined by the Traffic Authority and set out in the Fees and Charges By-Law.
- d) **Parking Regulations in Manitoba Developmental Centre Area**
  - 1) Subject to subsection 3) and notwithstanding any other parking restrictions set out in this by-law, parking on both sides of the following Streets and avenues within the City is prohibited between the hours of 9:00 a.m. and 6:00 p.m., seven days a week:
    - i) Royal Road N. from 7<sup>th</sup> Avenue to Dickens Avenue
    - ii) Midland Street from 7<sup>th</sup> Avenue to Dickens Avenue
    - iii) 2<sup>nd</sup> Street N.E. from 7<sup>th</sup> Avenue to Dickens Avenue
    - iv) Dickens Avenue from Tupper Street to 3<sup>rd</sup> Street N.E.
  - 2) All of the said Streets shall be posted with parking restriction signs, the form of which is set out on Schedule D-1.
  - 3) The parking restrictions set out in subsection 1) shall not apply to a Vehicle displaying a valid Special Parking Permit, the form of which is set out on Schedule D-2.
  - 4) Special Parking Permits for the Streets referred to in subsection 1) shall be issued by the Manager of Administration, subject to the conditions set out in the subsections following.
    - i) A Special Parking Permit may be obtained by a resident of a dwelling located on one of the Streets or avenues described in subsection 1).
    - ii) An applicant for a Special Parking Permit must provide confirmation of residency within the area described in subsection 1).
    - iii) There shall be no charge for the issuance of the annual Special Parking Permits.
    - iv) Special Parking Permits shall be valid for the resident as long as he remains a resident within the area described in subsection 1). If he moves, the new resident must apply for a Special Parking Permit.
  - 5) A Special Parking Permit shall be displayed in the inside lower corner of the windshield on the passenger's side of the Vehicle with the "front" side of the permit facing out.
  - 6) A maximum of three (3) Special Parking Permits will be issued per household.
  - 7) Replacement Special Parking Permits may be obtained for a fee as set out in the Fees and Charges By-Law.
- e) **School Bus Zones**
  - 1) **Establishment of School Bus Zones**
    - i) School Bus Zones so designated by Traffic Control Devices for the loading and unloading of School Bus passengers shall be at such locations as may, from time to time, be designated by the Traffic Authority.
    - ii) Each School Bus Zone shall be of such dimensions as the Traffic Authority shall deem, in each particular case, necessary.

- iii) School Bus Zones adjacent to an intersection shall be identified by a single Traffic Control Device at that end of the Bus Zone furthest from the intersection while other School Bus Stops shall be identified by two Traffic Control Devices located at each end of the Bus Stop.
- 2) **Restricted Use of School Bus Zones**  
It shall be an offence for any person to stop, stand or park a vehicle, other than a School Bus, in a School Bus Zone during the hours 08:30 to 09:30, and from 15:00 p.m. to 16:30. Vehicles in violation may be cited and/or towed away in accordance with the provisions of this By-Law.
- f) **Offence**  
It shall be an offence for any Person other than a Person to whom such Special Parking Permit has been issued, to park a Vehicle in contravention of this section.

#### 47. **PARKING PROHIBITION TO ACCOMMODATE SNOW CLEARING**

##### a) **During Severe Weather Conditions**

- 1) Whenever he finds that weather conditions are restricting Motor Vehicle traffic flow, the Mayor may prohibit or restrict parking on any City Streets for snow plowing and other purposes. Such parking restrictions may be put into effect on Streets as necessary by declaring the parking restriction in a manner prescribed hereinafter. This restriction shall remain in effect until terminated by announcement of the Mayor.
- 2) The Minister of Highways and Transportation, or his designate, shall have the same powers as the Mayor as set out in subsection a) above over Designated Highways.
- 3) Upon such Declaration being made, parking a Vehicle on any portion of a Street within the limits of the City on the days stated in the Declaration is an offence in accordance with Section 64 of this by-law and the vehicle may be towed in accordance with Section 55.
- 4) For the information of the general public:
  - i) The Manager of Administration shall forthwith post at the City Hall the signed and dated Declaration referred to in subsection 3).
  - ii) The Manager of Administration shall forthwith release a copy of the Declaration to the media whose offices are within the limits of the City.
  - iii) The Director shall cause signs to be erected on major Streets within the City which shall state that the Parking prohibition is or is not in effect and which shall provide a telephone number that the public may use to obtain further information.
  - iv) During the time the parking prohibition is in effect, the Director or his designate may direct that a Vehicle parked on a Street in contravention of the prohibition be towed to the nearest Street that has been cleared. The Person responsible for ordering the Vehicle to be towed shall immediately notify the Detachment Commander of such action stating where the Vehicle was removed from, where it was relocated to, the reason for such relocation, and a description of the Vehicle involved. The Detachment Commander shall then take all reasonable steps to notify the owner of such action and advise where the Vehicle was relocated to.

##### b) **During Normal Weather Conditions**

- From November 1 to April 30 in each year, no person shall park a Vehicle on any portion of a Street
- i) on the business day following residential garbage collection; or [AM By-Law 05-8254]

- ii) upon the City providing 24 hours notice by way of "No Parking" signs;

until the snow removal equipment has completed the work on that street.

#### 48. LIMITED TIME PARKING

a) **Regulations Not Exclusive**

The Traffic Authority, the Detachment Commander, the Director and/or the Fire Chief may override the provisions of this by-law and impose more restrictive provisions on Stopping, Standing or Parking pursuant to their discretionary powers as set out herein or elsewhere where required in the interest of public safety or convenience.

b) **Parking Time Limited**

Where a Traffic Control Device indicates a maximum parking time, or a maximum parking time during certain hours and/or days, it shall be an offence for a Person to park a Vehicle on those Streets or portions of Streets during restricted hours or days for a period in excess of the period of time stated on the Traffic Control Device. Any Vehicle being operated for the transportation of a physically disabled Person and identified by a Physically Disabled Parking Authorization Permit shown therein, may be parked for no more than four (4) consecutive hours in any such limited time parking space.

c) **Officers Marking Parked Vehicles**

- 1) An Officer, for the purpose of enforcing the provisions of this or any other By-law or regulation of the City respecting the parking of Vehicles, may make or place a mark upon any tire of a Vehicle which is parked upon a Street.
- 2) It shall be an offence for any Person to remove, alter, obliterate or deface a mark made or placed upon a Vehicle by an Officer as provided in Subsection 1) until the Vehicle has been moved through the nearest Intersection.

d) **Additional Offences**

- 1) Notwithstanding any Traffic Citation which may already have been issued with respect to a Vehicle which is found Parked, Stopped or Standing in violation of any parking restriction contained in this by-law, each additional observed violation or period of violation shall constitute a separate offence if the continuing offence is a "time related offence". All other parking offences shall constitute a separate offence every twenty-four hours after the issuance of the first Traffic Citation.
- 2) For the purpose of this section, a "time related offence" is any breach of a provision of this by-law which restricts the time a Vehicle may be parked, or left standing on a Street or off-Street Parking area within the City.

#### 49. PARKING METERS AND PARKING METER ZONES

a) In this part:

- 1) "Parking Meter" or "meter" means a mechanical appliance designed for the purpose of automatically gauging and indicating the time within which a Vehicle is, or may be, parked in a metered space and installed thereat pursuant to this by-law.
- 2) "Metered space" means that portion of a Street or avenue marked out or indicated, pursuant to this by-law, for the accommodation of a Vehicle and adjacent to, or in front of which, a Parking Meter has been installed.

- b) The owner of a Vehicle shall be responsible for the actions required by the Driver of a Vehicle under this part, and shall be liable for any violation of any provision of this part by the Driver of his/her Vehicle.

- c) Metered spaces shall be marked out, and Parking Meters shall be placed, or installed, on the Streets and avenues or portions thereof described in Schedule "E" hereto.
- d) **Using Meters**
- 1) During the time set out in Section g) hereof, the Driver of a Vehicle shall, immediately after parking a vehicle in a metered space, deposit or cause to be deposited in the proper Parking Meter as herein designated, adjacent to such meter space in the following Zones as specified in Schedule E attached to this by-law:  
  
ZONE A: .25 cents, \$1.00 or \$2.00 to become effective upon installation of new meters  
ZONE B: .05 cents, .10 cents or .25 cents  
  
And shall do whatever is necessary to put the Parking Meter in operation, in accordance with the directions on the Parking Meter, or herein provided. Upon depositing the coin and putting the meter into operation, the Driver shall be entitled to park the vehicle in such metered space, at the rate as established in the Fees and Charges By-Law. [*AM By-Law 13-8595*]
  - 2) A Driver required to pay under subsection **Error! Reference source not found.** of this section may use the unexpired time shown on the Parking Meter from its previous use, without depositing any coin.
  - 3) No Person shall deposit or cause to be deposited in a Parking Meter any slug, device or other substitute for the coin prescribed in this by-law.
- e) No Driver of a Motor Vehicle shall allow the Vehicle to remain parked in a metered space while the disc or "violation" signal of the Parking Meter designated herein for said metered space, indicates a violation, or time expired, during the time set out in Section g) hereof.
- f) Every Driver of a Vehicle parking such Vehicle at a metered space shall:
- 1) Park the Vehicle in such a manner that it is wholly within the metered space;
  - 2) park the Vehicle so that the foremost part shall be as close as possible to the Parking Meter designated herein to be used by the Driver of the Vehicle;
  - 3) when parking a Vehicle in a metered space where there is a single Parking Meter installed, park the Vehicle so that the Parking Meter herein designated to be used by the Driver of the Vehicle is in front of the Vehicle;
  - 4) when parking a Vehicle in a metered space where there is a double Parking Meter installed, park the Vehicle so that it is wholly in front of the upright supporting the Parking Meter in front of the Vehicle, or wholly behind such upright;
  - 5) when parking a Vehicle in a metered space where there is a single Parking Meter installed, deposit a coin or coins in the Parking Meter in front of the Vehicle;
  - 6) when parking a Vehicle in a metered space when there is a double Parking Meter installed, deposit a coin or coins in the meter behind the Vehicle if the Vehicle is parked in front of the upright supporting the double Parking Meter and shall deposit a coin or coins in the meter in front of the Vehicle if the Vehicle is parked behind the upright supporting the double Parking Meter.
- g) The Driver of a Vehicle shall comply with the provisions of Section d) hereof between 09:00 hours and 18:00 hours, on Monday, Tuesday, Wednesday, Thursday and Friday, except on a Holiday.
- h) ~~Parking Pass:~~
-

- ~~1) Parking passes may be issued without charge to Drivers of Vehicles from outside the City while attending a convention in the City. (Deleted by 05-8254)~~
- ~~2) The parking passes shall state that the Driver of the Vehicle on which the parking pass is stuck shall not be required to deposit coins in a Parking Meter when said Vehicle is parked in a metered space, on the day or days stated therein. [DEL by 05-8254]~~
- ~~3) When a parking pass is placed on the inside of the windshield of a Vehicle parked in a metered space, the Driver of such Vehicle shall not be required to deposit coins in a Parking Meter or otherwise comply with Section d) hereof, during the days stated on such parking pass. [DEL by 05-8254]~~
- ~~4) Written application for the parking passes shall be made to the City Manager of the City by the organization or club holding a convention in the City, and the application shall state the day or days on which the convention is to be held, the number of parking passes required for Vehicles, the Drivers of which are attending the convention from out of the City, and the name of a member of the organization or club to whom the parking passes are to be given. [DEL by 05-8254]~~
- ~~5) After such application is received, the Traffic Authority of the City may direct the City Manager to give the member of the organization or club mentioned in the application the number of parking passes required, and after stating therein the date or dates when the parking passes may be used, the City Manager shall give such parking passes to such member of the organization or club. [DEL by 05-8254]~~
- ~~6) A member of the organization or club holding the convention shall write on the parking pass in indelible ink, the name of the Person from outside the City attending the convention and the license number of his/her Vehicle before giving it to such Person for use. [DEL by 05-8254]~~

i) **Special Circumstances:**

- 1) Whenever, due to any special circumstances, the Officer considers that any metered space should be temporarily discontinued as a parking space, he/she may cause the meters to be hooded or covered, and may cause to be placed or erected at such metered space, a Sign or signs directing "NO PARKING", with such additional wording thereon as he/she may deem necessary, provided the Officer may permit said parking space to be used for any lawful purpose during the period the said meters are hooded.
- 2) No Person shall park a Vehicle at any portion of a metered space while parking thereat has been prohibited pursuant to subsection 1) of this section, except as permitted under said section.
- 3) No unauthorized Person shall willfully tamper with, open, deface, break, destroy or impair a Parking Meter installed under the provisions of this by-law.

**50. METERED PARKING SPACE RENTALS**

- a) The Traffic Authority or its designate may authorize the rental of one or more metered parking spaces if satisfied such space or spaces are to be used during, and for the purpose of, construction, renovation or maintenance work to be carried out on adjacent property. Such meter(s) may be hooded or actually be removed. The various fees to be charged for hooding meters, removal and replacement of meters, related application fees and other charges are as detailed in the City's Fees and Charges By-Law.
- b) Subject to subsection a) above, no Vehicle shall be parked adjacent to a hooded Parking Meter or adjacent to a metered parking space where the meter has been removed unless the Vehicle operator has obtained permission from the Traffic Authority for the rental of that parking space.

**51. SATURDAY, SUNDAY AND HOLIDAY EXEMPTIONS**

Any metered space may be used without payment on Saturdays, Sundays; on Public Holidays; and between 18:00 hours on any day and 09:00 hours the following day unless otherwise indicated on the Parking Meter.

**52. DESIGNATED EXEMPTIONS AT PARKING METERS**

- a) The Traffic Authority may, by resolution, designate any day or days when parking without payment will be allowed in a metered zone.
- b) Notwithstanding Sections 51 and subsection a) above, every Vehicle parked in a metered zone on Saturdays, Sundays, Public Holidays, any day that City Hall is closed in observance of a holiday, designated days as authorized pursuant to subsection a) above, or between 18:00 hours on any day and 09:00 hours the following day, is subject to all other provisions of this By-Law. [AM by Res. 29/06]
- c) That any motor vehicle displaying an out of province license plate shall have free parking at any city of Portage la Prairie parking meter on City of Portage la Prairie property. [AM by By-Law 08-8407]

**53. CITATION OF VEHICLE PARKED OR LEFT IN VIOLATION OF BY-LAW**

- a) Whenever any Motor Vehicle is found parked or left in violation of any provision of this By-law, an Officer, on finding such Vehicle, shall conspicuously affix a Traffic Citation to such Vehicle. Such citation shall contain the license plate number and such other information describing the Vehicle as the Officer determines to assist in identifying the owner or operator of the Vehicle.
- b) Notwithstanding Section 48.d)1), if the Vehicle with a Traffic Citation affixed has not been moved nor money placed in the parking meter after a period of two (2) hours, the Officer shall conspicuously affix a second Traffic Citation to such Vehicle, and shall continue to place a new Traffic Citation on the Vehicle for each two hours the Vehicle is not moved nor money placed in the parking meter.

**54. LIENS AND JUDGEMENTS RESPECTING OUTSTANDING TRAFFIC CITATION(S)**

The Traffic Authority may, by resolution, establish a policy to initiate proceedings by lien or by judgement for the collection of outstanding Traffic Citations. Such proceedings shall be in accordance with the provisions of The Summary Convictions Act, S.M. 1985-86, Chap.S230, and current amendments thereto.

**55. REMOVAL, IMPOUNDING AND RETURN OF VEHICLES**

**a) Removal of Vehicles Unlawfully Parked**

- 1) Any Vehicle may be towed from a Street or from an off-Street parking area when, in the opinion of an Officer, the Vehicle:
  - i) is impeding traffic flow; or
  - ii) is restricting access to or from a Street; or
  - iii) is a hazard to other Vehicle operators; or
  - iv) is a hazard to Pedestrians; or
  - v) is a hazard to private or public property; or
  - vi) is parked on a Street during a parking restriction in accordance with Section 47 of this by-law.
  - vii) has been parked for longer than seven consecutive days in accordance with Section 42.c)ii).
  - viii) has been parked for longer than 48 consecutive hours in accordance with Section 42.c)xi).  
[AM – By-Law 09-8436]

- 2) where the same Vehicle has been Cited previously for the same or similar offences so as to constitute, to the Officer involved, a course of conduct contrary to the provisions of this or other by-laws, The Highway Traffic Act or The Municipal Act, or alternatively, such prior breach may be a continuing offence where the Vehicle has not been moved since being Cited previously.

**b) Reasons to Tow Vehicle**

Any Vehicle shall be towed from a Street or from an off-Street Parking area when it:

- i) occupies or partially occupies a Fire Lane or other emergency access lane; or
  - ii) occupies a Bus Stop or Bus zone; or
  - iii) occupies a railway crossing; or
  - iv) is parked within 3 meters (9.84 feet) of a fire hydrant; or
  - v) is double parked; or
  - vi) ~~is parked in an area designated as "no Stopping anytime"~~; is parked in an area designated "no Parking" or [AM 04-8250]
  - vii) is parked on a Street during a parking restriction in accordance with Section 47 of this by-law.
  - viii) Is a currently unregistered vehicle; or (AM 04-8250)
  - ix) Is parked on a boulevard. (AM 04-8250)
- c) Recovery of Impounded Vehicle**
- 1) Any Person requesting the release of such Vehicle shall:
- i) sign a receipt for its return,
  - ii) pay the cost of removal,
  - iii) pay any cost of storage accrued.
- 2) Until paid, these charges constitute a lien on the Vehicle which may be enforced in the same manner as a garage keeper's lien in accordance with the provisions of The Garage Keeper's Act.
- d) Record of Impounded Vehicle**
- It shall be the duty of the Detachment Commander to keep a record of each Vehicle removed in accordance with this By-law. The record shall include a description of the Vehicle, its license plate number, the date and time of its removal, where it was removed from, its location, the name and address of its owner and last operator, if known, its final disposition, and the parking violation involved.
- e) Authority to Remove Vehicles**
- This Section shall be supplemental to any other provision of law granting Officers authority to remove Vehicles.

**56. PARKING ON PRIVATE PROPERTY**

- a) It shall be an offence for any Person to park or leave a Vehicle on Private Property or any Off Street Parking area on which there is erected and maintained a Traffic Control Device(s) indicating:
- 1) that the parking of Vehicles thereon is prohibited; or
  - 2) that parking of Vehicles is prohibited without the permission of the owner, occupant or the Person in charge or control of the property, and such permission has not been obtained; or
  - 3) that parking of Vehicles thereon during the period indicated, without the permission of the owner, occupant or the Person in charge or control of the property, and such permission has not been obtained, is prohibited; or
-



- 4) that the posted area is designated as a physically disabled Persons parking zone, unless that vehicle is displaying a permit in accordance with The Highway Traffic Act and the regulations under that Act.
- 5) that the posted area is designated as a Fire Lane.
- b) The owner, occupant or Person in charge or control of Private Property who wishes to take advantage of the regulations in this Section for the purpose of keeping Persons or unauthorized Persons from parking or leaving Vehicles on the property or within certain Parking Stalls shall erect and maintain thereon clear and legible signs, at least 18 inches square with printed letters at least 2 inches high which indicate that, pursuant to the City's Traffic By-law, parking is prohibited or is restricted to certain users, such as customers or physically disabled Persons, or to certain days or times.
- c) In cases where special permits are issued to designate certain Persons as authorized users of a private parking area or Parking Stall, such as physically disabled parking permits, the Sign which restricts parking in that area or stall shall also state 'permit must be displayed'.
- d) For the purpose of this section, an unauthorized parked Vehicle shall mean any and all Vehicles parked or left standing on Private Property contrary to subsections a), b), or c) above.
- e) Pursuant to subsections b) and c) above, the property owner, occupant or Person in charge or control, shall establish a suitable system for the allocation of authorized or reserved parking spaces on each property and shall be responsible for determining whether or not any specific Vehicle is authorized to park in a particular Parking Stall.
- f) Pursuant to subsections b) and c) above, the property owner, occupant or Person in charge or control, shall allow any Vehicle displaying a "Physically Disabled Parking" authorization symbol to park in a "Physically Disabled Parking only" parking lot or Parking Stall.
- g) It shall be an offence for any Person to park a Vehicle in such a lot in a manner that makes a "Physically Disabled Parking only" Parking Stall inaccessible, unless a Physically Disabled Parking Authorization permit is displayed in the Vehicle and is used in accordance with the Act and the regulations of the Act.
- h) For the purpose of this section and Section 57, any revenues generated from fines collected as a result of the enforcement of these sections shall be paid to and retained by the City to help cover the costs of such enforcement.

#### **57. OFF-STREET PARKING LOTS**

- a) Where stalls or allotments are designated or marked out within any Off-Street Parking Area, every Person parking a Vehicle within any such area shall park the same so that the Vehicle shall conform to the direction of parking and be wholly within the boundaries of such stall or allotment. Failure to do so shall constitute an offence under this By-law.
  - b) It shall be an offence for any Person to park a Vehicle in such a lot, whether lined or unlined, in such a manner as to impede the free flow of traffic within such lot, or in a manner that makes a "physically disabled Parking only" Parking Stall inaccessible, unless a Physically Disabled Parking Authorization permit is displayed in the Vehicle and is used in accordance with the Act and the regulations under the Act.
  - c) It shall be an offence for any Person to park a Vehicle in a Parking Stall if such stall has been designated "no unauthorized parking" or "reserved parking only" or "physically disabled parking only" unless specifically authorized to so park by a designated official of the City.
-

**58. PARKING VIOLATIONS**

- a) Vehicles parked in violation of Sections 56 and 57 may, at the option of the property owner, be towed from the property and impounded.
- b) The towing of any Vehicle pursuant to this section shall be subject to provisions of Section 55.
- c) The Police Service shall be notified by the towing contractor of the removal of a Vehicle pursuant to this section and such notice shall include the following details; make, model, and license plate number of the Vehicle, date and time of its removal, where it was removed from, its final disposition and the parking violation involved.

**59. OTHER REGULATIONS**

a) **Operation of Snowmobiles and Off Road Vehicles**

It shall be an offence for any Person to operate an off-road Vehicle or all terrain Vehicle on a Street within the City unless authorized pursuant to The Off-Road Vehicles Act RSM 1987-88 c.O31.

b) **Engine Retarder Braking System**

No person operating a vehicle shall use engine retarder brakes in the City, except to avoid or reduce the impact of a collision or in the case of such other emergency. The existence of the by-law provision is noted on large roadside signs at each highway entrance into the City.

c) **Time References**

All time references in this By-law are on a twenty-four hour clock basis: 00:00 hours being midnight and 12:00 hours being noon however, time references on Traffic Control Devices may be shown on a twelve hour clock designating a.m. or p.m. as required.

Hour designations shall be deemed to refer to Daylight Savings Time when such is in current use in the City, and at all other times, to Central Standard Time.

d) **Routes for Truck Travel**

**1) Use of Truck Routes**

- i) All Trucks shall be operated only over and along the Streets or sections of Streets set forth as Truck Routes on Schedule "C" hereto or on such other routes as designated by the Traffic Authority.
- ii) Notwithstanding paragraph i) above, Trucks with a gross Vehicle weight of less than 5,773 kilograms (12,727 lb.) may travel on all Streets within the City.
- iii) Notwithstanding paragraph i) above, any Truck may operate on any Street where necessary to the conduct of business at a destination point, provided that Truck Routes are used until reaching the Intersection nearest the destination point. Upon leaving the destination point, a Truck shall return by the shortest route to a Truck Route.
- iv) Royal Road Bridge – notwithstanding paragraph i) above that the following weight restrictions be assigned to Royal Road Bridge: [AM by By-Law 10-8470 Res.#47/20]

Single axle	6,700kg at 30km/h (7,800kg <10km/h)
Tandem Axle group	13,400 kg at 30km/h (15,600 kg <10 km/h)
Triaxle group	13,890 kg at 30km/h (16,080 kg <10 km/h)

- 2) All routes identified or designated as Truck Routes pursuant to paragraph 1)i) above, shall be identified by the placement of Traffic Control Devices adjacent thereto.
- 3) All Streets and/or sections of Streets designated as Truck Routes may be used as such for the full twenty-four hours of each day of the year unless otherwise designated. The Director shall keep and maintain a current map setting out the Streets or portions of Streets designated as Truck Routes and copies of the map shall be available to the public at no charge. Such map shall also show those Streets, if any, from which all Trucks are prohibited.
- 4) Where, at any time, conditions arise whereby, in the opinion of the Director, the Street is or is likely to be damaged by the operation of any class of Vehicle, the Director may order, subject to subsection 5) below an immediate discontinuance of the operation of any class of Vehicle or all Vehicles over that Street or portion of Street until such time as the Director re-opens the Street or portion of Street.
- 5) Prior to making an order under subsection 4) above for any Provincial Highway or Designated Highway, the Director shall first receive approval of the Minister of Highways and Transportation or his designate.
- 6) The Traffic Authority may by resolution prohibit the operation of any Truck on any Street or Lane.

#### 60. TRANSPORTATION OF DANGEROUS GOODS

It shall be an offence for any Truck or other Vehicle carrying Dangerous Goods, notwithstanding such Vehicles' gross vehicle weight, to travel over or along any Streets or sections of Streets within the City other than those designated as Dangerous Goods Truck Routes on Schedule "A" hereto.

#### 61. EXCAVATIONS

- a) It shall be an offence for any Person to cut, break, tear up or remove any road surface or make any excavation in or under any Street, Boulevard, or Sidewalk for any purpose.
- b) Subsection a) shall not apply to the Department of Highways, its agents or employees with respect to Provincial Highways or Designated Highways;
- c) Notwithstanding subsection a) and subject to subsection d), the Director may issue an excavation permit, in a form approved by the Director, for the purpose of a Street or Boulevard cut, or construction of Roadways, Approaches, Sidewalks, road grades, drainage ditches, or repair to and construction of water, sanitary sewer, storm sewer lines, natural gas, electric and telecommunication services.
- d) Prior to issuance of an excavation permit the applicant shall:
  - 1) make application to the Director, in a form approved by the Director for an excavation permit and shall meet the following requirements:

- i) Make payment of a permit fee, in the amount set out in the current Fees and Charges By-Law, together with any other prescribed fees.
  - ii) Make application for excavation permits for sewer, water, gas or other Utility service connections at least forty-eight (48) hours prior to commencement of the work except in the case of emergency repair work when immediate notice shall suffice.
  - iii) Make application for excavation permits for Utility Structures at least seven days prior to commencement of the work except in the case of emergency repair work when immediate notice shall suffice. Such plans as may be required showing alignment, grade and structural details of the proposed work shall be supplied to the Director for inspection and approval before an excavation permit is issued. Changes in alignment or grade must be approved by the Director before being carried out in the field and "revised as constructed" plans shall be submitted upon completion of the work.
- e) The Director has the authority to:
- 1) deny the issuance of any excavation permit where in his/her opinion it is in the public interest to do so. Any such denial of permit may be appealed to the Traffic Authority.
  - 2) cancel any excavation permit which has been issued under his/her authority at any time, if the permit holder or his/her agent(s) fail to comply with any of the imposed requirements or conditions under which said permit was originally issued.

## 62. DRIVEWAY PERMITS

Notwithstanding section 61, any Person wishing to construct a driveway Approach shall make application to the Director for a driveway permit. The permit shall be in such form as authorized by the Director, and issuance of such permit shall be subject to:

- a) payment of an application fee as set out in the City's Fees and Charges By-Law; and
- b) compliance with all regulations and conditions contained on said permit.

## **VII PENALTIES**

### **63. LIABILITY OF OWNERS TO CONVICTION**

- a) Any Person who violates, contravenes, disobeys or refuses, omits, neglects, fails to observe, obey or comply with any or all provisions of this By-law is guilty of an offence and is liable on summary conviction to a fine not exceeding \$500.00 or to imprisonment for a term not exceeding 3 months, or to both such fine and such imprisonment.
- b) Pursuant to Section 249 of The Municipal Act where such contravention, refusal, neglect, omission, or failure to obey or observe continues for more than one day, the Person is guilty of a separate offence for each day that it continues.

### **64. PARKING VIOLATIONS**

- a) Where an offence as alleged in Section 63 hereof is a parking violation, the specific fines as set out in the City's Fees and Charges By-Law are to be levied upon a guilty plea before a Magistrate.
- b) Parking violation service shall be effected by leaving a Traffic Citation as referred to in Section 53 hereof with the owner or operator of the Vehicle by affixing the said citation to the Vehicle in question.

### **65. GENERAL PENALTIES**

Where any Person in charge or control of a Bicycle commits any infraction of the regulations contained herein respecting Bicycles, an Officer may, upon observing any such infraction, seize such Bicycle and impound same for a period of thirty days. The owner of any such Bicycle so impounded may recover same by:

- 1) providing sufficient proof of ownership to the Police Service; and
- 2) paying a fine in accordance with the City's Fees and Charges By-Law.



---

**SCHEDULE "A"**  
**to**  
**By-Law No. 01-8105**

**DANGEROUS GOODS TRUCK ROUTES**

1. 3<sup>rd</sup> Street N.E. between Saskatchewan Avenue E. and 5<sup>th</sup> Avenue.[AM by Res 240/05]
2. 4<sup>th</sup> Avenue N.E. between 14<sup>th</sup> Street N.E. and Stephens Avenue.
3. 4<sup>th</sup> Avenue N.E. between Tupper Street N. and 5<sup>th</sup> Street N.E.
4. 4<sup>th</sup> Street N.E. between Lorne Avenue E. and Alfred Avenue.
5. 5<sup>th</sup> Avenue N.E. and N.W. between 3<sup>rd</sup> Street N.E. and 12<sup>th</sup> Street N.W.
6. [DEL by Res 240/05]
7. 5<sup>th</sup> Street S.E. between Saskatchewan Avenue E. and Crescent Road E.
8. 6<sup>th</sup> Avenue N.W. between 8<sup>th</sup> Street N.W. and 15<sup>th</sup> Street N.W.
9. 8<sup>th</sup> Street N.W. between Saskatchewan Avenue W. and Richardson Boulevard.
10. 10<sup>th</sup> Street N.E. between Saskatchewan Avenue E. and Fisher Avenue E.
11. 12<sup>th</sup> Street N.E. between Lorne Avenue E. and the CNR tracks.
12. 14<sup>th</sup> Street N.E. between 6<sup>th</sup> Avenue N.E. and 4<sup>th</sup> Avenue N.E.
13. 14<sup>th</sup> Street N.E. between Saskatchewan Avenue E. and CNR tracks.
14. [DEL by Res 240/05]
15. [DEL by Res 240/05]
16. 24<sup>th</sup> Street between Saskatchewan Avenue W. and Park Drive.
17. 25<sup>th</sup> Street between Saskatchewan Avenue W. and Park Drive.
18. Alfred Avenue E. between 3<sup>rd</sup> Street N.E. and 4<sup>th</sup> Street N.E.
19. Angle Road between Saskatchewan Avenue E. and Highway #1.
20. Berkley Avenue between McDonald Street and Phillips Street.
21. Crescent Road W. between Kelly K Street and West City limits.[AM Res 240/05]
22. [DEL by Res 240/05]

23. Fisher Avenue E. and W. between 10<sup>th</sup> Street N.E. and 8<sup>th</sup> Street N.W.
24. Highway #240 between Highway #1 and City Limits.
25. Jolin Place.
26. Lincoln Avenue between McDonald Street and the east City limits.
27. Lorne Avenue E. between 10<sup>th</sup> Street N.E. and 15<sup>th</sup> Street N.E.
28. Lorne Avenue E. between 3<sup>rd</sup> Street N.E. and 4<sup>th</sup> Street N.E.
29. MacDonald Street between Berkley Avenue and Richardson Boulevard.[AM by Res 240/05]
30. McCain Avenue between Phillips Street and Westco Drive and Westco Drive to the north City limit.  
AM by Res 240/05]
31. Pacific Avenue E. and W. between 8<sup>th</sup> Street N.W. and 3<sup>rd</sup> Street N.E.
32. Park Drive between 18<sup>th</sup> Street N.W. and 25<sup>th</sup> Street N.W.
33. Phillips Street between 6<sup>th</sup> Avenue N.E. and McCain Avenue.
34. Richardson Boulevard between McDonald Street and the west City limits.
35. River Road between 5<sup>th</sup> Street S.E. and Highway #1.
36. Saskatchewan Avenue E. and W. between the west City limits and the east City limits.
37. [DEL by Res 240/05]
38. Sissons Drive between 24<sup>th</sup> Street and Park Drive.
39. [DEL by Res 240/05]
40. Stephens Avenue between Saskatchewan Avenue E. and Lincoln Avenue.
41. Trenton Avenue between 3<sup>rd</sup> Street N.E. and Stephens Avenue.
42. Tupper Street N. between Saskatchewan Avenue and Richardson Boulevard.
43. Westco Drive between 6<sup>th</sup> Avenue N.E. and McCain Avenue.

- end -



**SCHEDULE "B"**  
**to**  
**By-Law No. 01-8105**

**DANGEROUS GOODS PROHIBITED TRUCK ROUTES**

1. Bridge Road between Meighen Avenue and Henderson Drive.
2. Meighen Avenue between River Road and Bridge Road.
3. Henderson Drive between Meighen Avenue and Bridge Road.

- end -

**AMENDED SCHEDULE "C"**  
**To**  
**By-Law No. 01-8105**  
**As Per By-Law No. 08-8404**

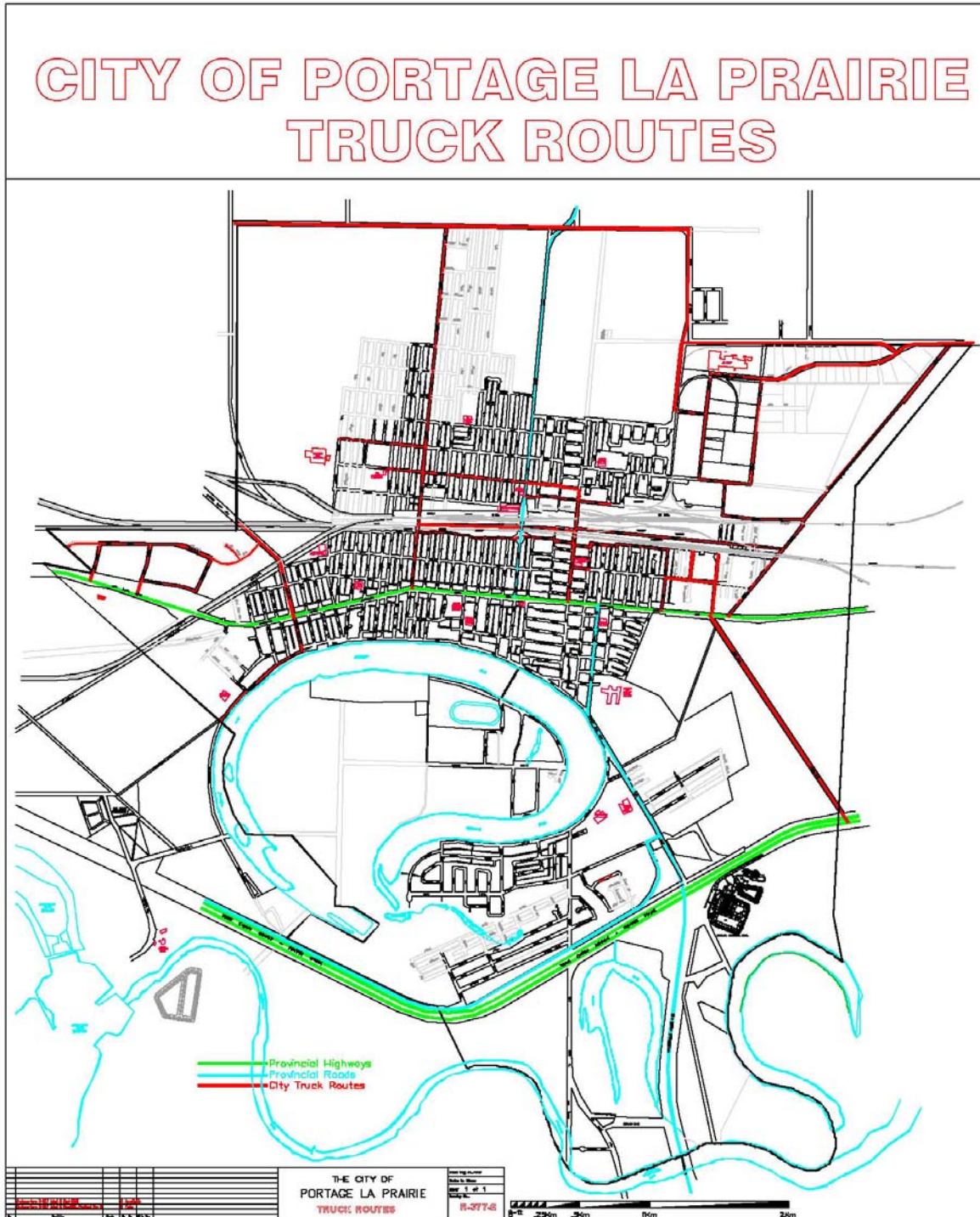
**TRUCK ROUTES**

1. 3<sup>rd</sup> Street N.E. between Saskatchewan Avenue and 5<sup>th</sup> Avenue
2. 4<sup>th</sup> Avenue between 14<sup>th</sup> Street N.E. and Stephens Avenue.
3. 4<sup>th</sup> Avenue between Tupper Street and 5<sup>th</sup> Street N.E.
4. 4<sup>th</sup> Street N.E. between Alfred Avenue and of Lorne Avenue.
5. 5<sup>th</sup> Avenue between 3<sup>rd</sup> Street N.E. and 12<sup>th</sup> Street N.W.
6. 5<sup>th</sup> Street S.E. between Saskatchewan Avenue E. and Crescent Road E.
7. 6<sup>th</sup> Avenue between 8<sup>th</sup> Street N.W. and 15<sup>th</sup> Street N.W.
8. 8<sup>th</sup> Street N.W. between Saskatchewan Avenue and Richardson Boulevard.
9. 10<sup>th</sup> Street N.E. between Saskatchewan Avenue and Fisher Avenue.
10. 12<sup>th</sup> Street N.E. between Lorne Avenue and CNR tracks.
11. 14<sup>th</sup> Street N.E. between 6<sup>th</sup> Avenue and 4<sup>th</sup> Avenue.
12. 14<sup>th</sup> Street N.E. between Saskatchewan Avenue and CNR tracks.
13. 18<sup>th</sup> Street N.W. between Saskatchewan Avenue and the west City limits.
14. 18<sup>th</sup> Street S.W. between Saskatchewan Avenue and Crescent Road.
15. 24<sup>th</sup> Street between Saskatchewan Avenue and Park Drive.
16. 25<sup>th</sup> Street between Saskatchewan Avenue and Park Drive.
17. Alfred Avenue between 3<sup>rd</sup> Street N.E. and 4<sup>th</sup> Street N.E.
18. Angle Road south between Saskatchewan Avenue and Highway #1.
19. Berkley Avenue between MacDonald Street and Phillips Street.
20. Crescent Road between 18<sup>th</sup> Street S.W. and west City limits.
21. Fisher Avenue between 10<sup>th</sup> Street N.E. and 8<sup>th</sup> Street N.W.

22. Jolin Place.
23. Lincoln Avenue between MacDonald Street and the east City limits (joint boundary road).
24. Lorne Avenue between 3<sup>rd</sup> Street N.E. and 4<sup>th</sup> Street N.E.
25. Lorne Avenue between 10<sup>th</sup> Street N.E. and 15<sup>th</sup> Street N.E.
26. MacDonald Street between Richardson Boulevard and Berkley Avenue.
27. McCain Avenue between Phillips Street and Westco Drive and Westco Drive to the north City limit.
28. Pacific Avenue between 8<sup>th</sup> Street N.W. and 3<sup>rd</sup> Street N.E.
29. Park Drive between 25<sup>th</sup> Street and 18<sup>th</sup> Street N.W.
30. Phillips Street between 6<sup>th</sup> Avenue and McCain Avenue.
31. PR240 between Highway #1 and south City limits.
32. Provincial Highway No. 240 from Saskatchewan Avenue to the South City limits.
33. Richardson Boulevard between MacDonald Street and the west City limits.
34. River Road between 5<sup>th</sup> Street S.E. and Highway #1.
35. Saskatchewan Avenue between the west City limits and the east City limits.
36. Sissons Drive between 24<sup>th</sup> Street and Park Drive.
37. Stephens Avenue between Saskatchewan Avenue and Lincoln Avenue.
38. Trenton Avenue between 3<sup>rd</sup> Street N.E. and Stephens Avenue.
39. Tupper Street between Saskatchewan Avenue and the north City limits.
40. Westco Drive between 6<sup>th</sup> Avenue and McCain Avenue.
41. Tupper St. South.
42. Crescent Rd. E to Royal Rd.

- end -

(map of truck routes)



**SCHEDULE "D"**  
**to**  
**By-Law No. 01-8105**

**A. NO PARKING AREAS** [AM. by Res. 120/02]

1. East side of 3<sup>rd</sup> Street N.W. between 4<sup>th</sup> Avenue and 5<sup>th</sup> Avenue.
  2. West side of 1<sup>st</sup> Street N.W. between 4<sup>th</sup> Avenue and 5<sup>th</sup> Avenue.
  3. Both sides of 4<sup>th</sup> Avenue between 1<sup>st</sup> Street N.W. and 3<sup>rd</sup> Street N.W.
  4. South side of 5<sup>th</sup> Avenue between 3<sup>rd</sup> Street N.E. and 11<sup>th</sup> Street N.W.
  5. North side of 6<sup>th</sup> Avenue between 3<sup>rd</sup> Street N.E. and Westco Drive and between 8<sup>th</sup> Street N.W. and 15<sup>th</sup> Street N.W.
  6. South side of 6<sup>th</sup> Avenue between 3<sup>rd</sup> Street N.E. and 4<sup>th</sup> Street N.E. and between Tupper Street and 15<sup>th</sup> Street N.W.
  7. North side of 7<sup>th</sup> Avenue between Tupper Street and 8<sup>th</sup> Street N.W.
  8. North side of Dickens Avenue between Tupper Street and 3<sup>rd</sup> Street N.E.
  9. North side of McCain Street between Phillips Street and Westco Drive [AM. by Res. 120/02]
  10. West side of Phillips Street between McCain Street and 6<sup>th</sup> Avenue.
  11. North side of Fisher Avenue between 4<sup>th</sup> Street N.E. and 13<sup>th</sup> Street N.W.
  12. North side of Lorne Avenue between 8<sup>th</sup> Street N.W. and 12<sup>th</sup> Street N.E., excluding parking spots referenced in Clause B.1.[AM by Res. 313/05]
  13. South side of Lorne Avenue between 8<sup>th</sup> Street N.W. and Royal Road.
  14. South side of Lorne Avenue between 3<sup>rd</sup> Street N.E. and 12<sup>th</sup> Street N.E.
  15. North side of Lorne Avenue between 8<sup>th</sup> Street N.W. and 14<sup>th</sup> Street N.W.
  16. North side of McKay Avenue between 14<sup>th</sup> Street N.W. and 18<sup>th</sup> Street N.W.
  17. [DEL. By Res. 120/02]
  18. South side of Gigot Avenue between 12<sup>th</sup> Street N.W. and 13<sup>th</sup> Street N.W.
  19. East side of 13<sup>th</sup> Street N.W. between Gigot Avenue and Saskatchewan Avenue.
  20. West side of 12<sup>th</sup> Street N.W. between Gigot Avenue and Saskatchewan Avenue.
-

21. West side of 18<sup>th</sup> Street N.W. between McKay Avenue and Saskatchewan Avenue.
  22. West side of 18<sup>th</sup> Street S.W. between Saskatchewan Avenue and Crescent Road.
  23. East side of 4<sup>th</sup> Street S.W. between Crescent Road and Dufferin Avenue West. [AMD. By Res. 280/06]
  24. [DEL. by Res. 280/06]
  25. North side of St. George Avenue between Strathcona Road and 4<sup>th</sup> Street S.W.
  26. East side of Strathcona Road between St. George Street and Saskatchewan Avenue.
  27. [DEL. by Res. 280/06]
  28. West side of 3<sup>rd</sup> Street S.W. between Dufferin Avenue and Saskatchewan Avenue. [AMD. by By-Law 10-8472 Res. 59/10]
  29. South side of Crescent Road between 5<sup>th</sup> Street S.E. and west City limits.
  30. West side of 20<sup>th</sup> Street S.W. between Crescent Road and Saskatchewan Avenue.
  31. East side of Crescent Road E. from Bridge Road to a point on the eastern limit of said Crescent Road distant northerly thereon 738 feet from Bridge Road.
  32. East side of Crescent Road E. from River Road to a point on the eastern limit of said Crescent Road distant northerly thereon 1,249 feet from Bridge Road.
  33. West side of Crescent Road east between Bridge Road and River Road.
  34. North side of Wilkinson Crescent between Bridge Road and Armstrong Street.
  35. North side of Queen Avenue from 5<sup>th</sup> Street S.E. to a point on the northern limit of Queen Avenue distant westerly thereon 160 feet from the western limit of 9<sup>th</sup> Street S.E.
  36. ~~South side of Queen Avenue from 9<sup>th</sup> Street S.E. to a point on the southern limit of Queen Avenue distant westerly thereon 160 feet from the western limit of 9<sup>th</sup> Street S.E.~~ [AMD. By Res. No. 200/09]
  37. East side of 9<sup>th</sup> Street S.E. between Saskatchewan Avenue and Queen Avenue.
  38. East side of 5<sup>th</sup> Street S.E. between Saskatchewan Avenue and Countess Avenue.
  39. West side of 6<sup>th</sup> Street S.E. between Saskatchewan Avenue and Countess Avenue.
  40. North side of Duke Avenue between 3<sup>rd</sup> Street S.E. and 4<sup>th</sup> Street S.E. [AM. by Res. 120/02]
  41. West side of 4<sup>th</sup> Street S.E. between Duke Avenue and Countess Avenue.
-

42. [DEL. by Res. 120/02]
  43. [DEL. by Res. 120/02]
  44. South side of Prince Avenue between 2<sup>nd</sup> Street N.E. and 3<sup>rd</sup> Street N.E.
  45. East side of Royal Road between Fisher Avenue and Charlton Avenue.
  46. Both sides of 24<sup>th</sup> Street between Saskatchewan Avenue and Park Drive.
  47. Both sides of 25<sup>th</sup> Street between Saskatchewan Avenue and Park Drive.
  48. Both sides of 2<sup>nd</sup> Street N.E. between Prince Avenue and Saskatchewan Avenue.
  49. East side of 2<sup>nd</sup> Street N.E. between Dickens Avenue and Princess Avenue.
  50. North side of Duke Avenue between Royal Road and 3<sup>rd</sup> Street S.E.
  51. Both sides of Howie Avenue between Royal Road and 3<sup>rd</sup> Street S.E.
  52. West side of Tupper Street between Saskatchewan Avenue and rear lane north of same.
  53. West side of 2<sup>nd</sup> Street N.W. between 4<sup>th</sup> Avenue and 5<sup>th</sup> Avenue.
  54. West side of 12<sup>th</sup> Street S.W. between Saskatchewan Avenue and north entrance to cul-de-sac. [AM by Res. 120/02]
  55. North side of Saskatchewan Avenue between 9<sup>th</sup> Street N.E. and 100 feet east.
  56. East side of 10<sup>th</sup> Street N.E. between Saskatchewan Avenue and Lorne Avenue E. [AM by Res. 120/02]
  57. East side of Tupper Street between 4<sup>th</sup> Avenue and 5<sup>th</sup> Avenue.
  58. North side of Crescent Road between House 2036 and west City limits.
  59. East side of 8<sup>th</sup> Street N.W. between 6<sup>th</sup> Avenue N.W. and Richardson Boulevard.
  60. West side of 5<sup>th</sup> Street S.E. between Saskatchewan Avenue and Countess Avenue.
  61. North side of Countess Avenue between 5<sup>th</sup> Street S.E. and 6<sup>th</sup> Street S.E.
  62. East side of 4<sup>th</sup> Street N.E. between 6<sup>th</sup> Avenue and the rear lane north of 6<sup>th</sup> Avenue.
  63. East side of Bridge Road between Wilkinson Crescent and Caithness Street.
  64. South side of Meighen Avenue between River Road and Roe Street.
  65. North side of Meighen Avenue between Roe Street and Armstrong Street.
-

66. South side of Alfred Avenue between 3<sup>rd</sup> Street N.E. and 4<sup>th</sup> Street N.E.
  67. Both sides of Cambridge Street from a point distant southwesterly thereon 500 feet from the southwestern limit of Gertrude Avenue to the southwestern limit of Wardlaw Avenue.
  68. South side of Hazel Bay.
  69. North side of Caledonia Street.
  70. North side of Seneca Street.
  71. South side of Caithness Street.
  72. East side of Alexander Avenue.
  73. West side of Webster Avenue.
  74. West side of 8<sup>th</sup> Street N.W. from Saskatchewan Avenue to the north limit of Lot 21, Plan 100.
  75. East side of 8<sup>th</sup> Street S.W. from Saskatchewan Avenue to the north limit of Lot 65, Plan 31.
  76. North side of Crescent Road East from Royal Road to a point 40 meters to the east. [EN. by Res. 269/01]
  77. North side of Crescent Road East from Portage Avenue to 3<sup>rd</sup> Street East. [EN. by Res. 269/01]
  78. North side of Crescent Road East from 3<sup>rd</sup> Street East to a point 50 meters to the east (to the easterly lot line of 425 Crescent Road East). [EN. by Res. 269/01]
  79. North side of Crescent Road East from 5<sup>th</sup> Street East to a point 30 meters to the west (to the #1 Broadway entrance). [EN. by Res. 269/01]
  80. North side of Crescent Road West (30 m east of 4<sup>th</sup> Street S.W.) [EN. by Res. 120/02]
  81. North side of Crescent Road between 3<sup>rd</sup> Street S.E. and Portage Avenue. [EN. by Res. 120/02]
  82. North side of Crescent Road (30 m east of 3<sup>rd</sup> Street S.E. (House #425). [EN. by Res. 120/02]
  83. North side of Crescent Road (30 m east of Royal Road). [EN. by Res. 120/02]
  84. South side of Crescent Road East (Crescent E. to cul-de-sac). [EN. by Res. 120/02]
  85. South side of Lorne Avenue between 8<sup>th</sup> Street and 11<sup>th</sup> Street N.W. [EN. by Res. 120/02]
  86. South side of Lorne Avenue between 11<sup>th</sup> Street and 14<sup>th</sup> Street N.W. [EN. by Res. 120/02]
  87. [DEL by Res. 280/06]
  88. Both sides of Royal Road S. from International Drive to Pelechaty Drive. [EN. By Res. 201/02]
-



89. Both sides of International Drive from Royal Road to George Hill Drive. [EN. By Res. 201/02]
  90. ~~West side of 3<sup>rd</sup> St. S.W. adjacent to PCI athletic Field [EN. By Res. 107/08] [Deleted by By-By-Law 10-8472 Res. 59/10]~~
  91. North side of Dufferin Avenue between 2<sup>nd</sup> and 3<sup>rd</sup> St. S.W. Monday to Friday 8:00 a.m. to 4:00 p.m. [EN. By Res. 107/08]
  92. North side of Crescent Rd. E. from Royal Rd. to Tupper St. [EN. By Res. 167/08]
  93. West side of Tupper St. S. from Dufferin Ave. to Crescent Rd. [EN. By Res. 167/08]
  94. East side of the southerly 10m of Tupper St. S. [EN. By Res. 167/08]
  95. North side of Queen Avenue from 5<sup>th</sup> St. S.E. to 9<sup>th</sup> St. S.E. [Amd. by Res. 200/09]
  96. south side of Queen Avenue from a projection of the east limit of 6<sup>th</sup> St SE to the west approach of the Hospital parking lot; a distance of approximately 15m. [AM by By-Law 10-8495 – Res. No. 294/10].
  97. ~~North side of Princess Ave from 2<sup>nd</sup> St NE to 3<sup>rd</sup> St NE, except for loading operations. [AM by By-Law 10-8496 – Res. No. 296/10] [Repealed by By-Law 11-8513]~~ Northside of Princess Avenue from 2<sup>nd</sup> Street N.E. to 3<sup>rd</sup> Street N.E. [AM By-Law 11-8513]
  98. Northside of Princess Avenue from 2<sup>nd</sup> St. N.E. to 3<sup>rd</sup> St. N.E. [AM By-Law 11-8513]
  99. Southside of Queen Avenue form between the west and east approaches to the hospital public parking lot. [AM by Resolution #310/11]
  100. No parking on the west side of Pelechaty Drive from Royal Road South to Brandon Avenue. [AM by Resolution #09/12]
  101. No parking on the Royal Road causeway to Island Park. [AM by Resolution #09/12]
  102. No parking on both sides of River Road from 5<sup>th</sup> St. S.E. to the southerly City limits. [AM by By-law 12-8576]
  103. No parking from 8:00 a.m. to 4:00 p.m. on the North side of Dufferin Avenue west of 4<sup>th</sup> St. S.W. [AM By By-Law No. 12-8599]
  104. No parking on both sides of 8<sup>th</sup> Street N.W. between Fisher Avenue and 4<sup>th</sup> Avenue. [AM by By-Law 13-8609]
-

**B. 15 MINUTE PARKING RESTRICTION**

1. [DEL by Res 240/05]
2. North side of Saskatchewan Avenue at Midtown Market. [EN. by Res. 120/02]
3. North side of Saskatchewan Avenue at Gigot Short Stop Rec. Club (16:00 to 18:00 – Mon. to Fri.) [EN. by Res. 120/02]
4. South side of Saskatchewan Avenue at Screen Door and Service for Seniors. [EN. by Res. 120/02]
5. West side of Tupper Street South (RM of Portage office). [EN. by Res. 120/02]
6. East side of Tupper Street South (Stewart Greenslade office). [EN. by Res. 120/02]
7. South side of Saskatchewan Avenue W. (Ultra Cuts – Total Travel). [EN. by Res. 120/02]
8. South side of Saskatchewan Avenue W. (Central Plains Realty). [EN. by Res. 120/02]
9. North side of Saskatchewan Avenue W. (Panko's). [EN. by Res. 120/02]

**B.1 1 HOUR PARKING RESTRICTION**

1. North side of Lorne Avenue East between 3<sup>rd</sup> Street N.E. and 4<sup>th</sup> Street N.E. which encompasses the parking spots available to the public who are utilizing the Public Safety Building to conduct business. [EN by Res. 313/05]

**C. NO PARKING, BUS LOADING ONLY**

1. North side of 7<sup>th</sup> Avenue by LaVerendrye School (8:00–9:00 am and 3:00–4:00 pm). [EN. by Res. 120/02]
  2. North side of St. George by PCI Collegiate (8:30–9:30 am and 3:00–4:30 pm). [EN. by Res. 120/02]
  3. 4<sup>th</sup> Street S.W. by PCI and Prince Charles School (8:30–9:30 am and 3:00–4:30 pm) [EN. by Res. 120/02]
  4. West side of 6<sup>th</sup> Street S.E. by Victoria School (8:00–9:00 am and 3:00–4:00 pm). [EN. by Res. 120/02]
  5. West side of 4<sup>th</sup> Street N.E. at North Memorial School (lane to 6<sup>th</sup> Ave.). (8:30–9:30 am and 3:00–4:30 pm). [EN. by Res. 120/02]
  6. East side of 13<sup>th</sup> Street N.W. between Gigot and Saskatchewan Avenue. (8:00-9:00 am and 3:00-4:00 pm). [EN. by Res. 120/02]
  7. South side of Saskatchewan Avenue W. in front of Arc Industries (8:30 – 9:15 a.m. and 3:30 – 4:00 p.m.). [EN. by Res. 120/02]
-

8. North side of Dufferin Avenue, between 3<sup>rd</sup> Street S.W. and 4<sup>th</sup> Street S.W. [EN. Res. 280/06]

**D. NO PARKING EXCEPT ON SUNDAYS**

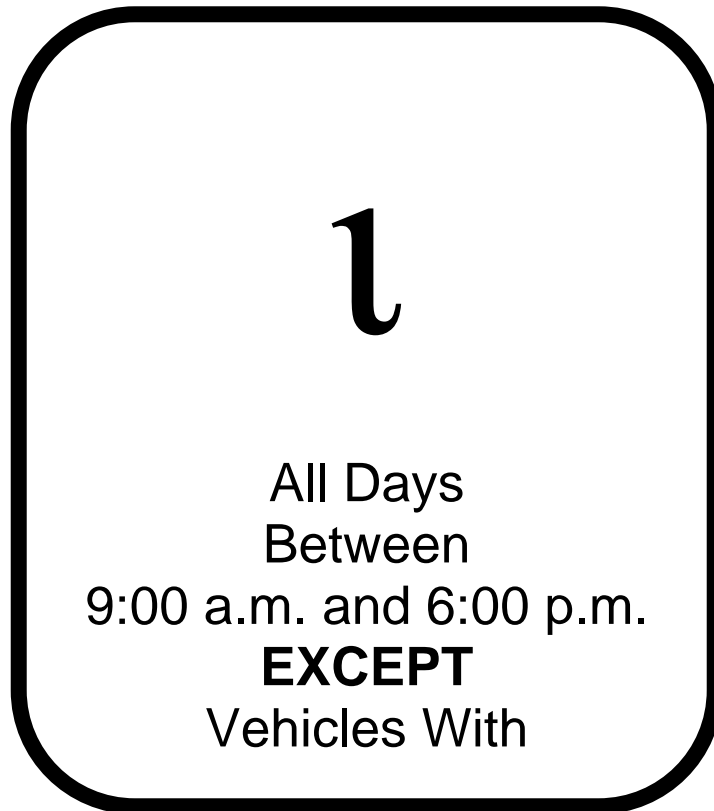
1. South side of Lorne Avenue between 11<sup>th</sup> Street and 14<sup>th</sup> Street N.W. [EN. By Res. 120/02]

**E. PARKING ALLOWED BY PASSES ONLY BETWEEN 9:00 A.M. AND 6:00 P.M.**

1. No parking all days between 9:00 a.m. and 6:00 p.m. except with permit – Royal Road N, Midland and 2<sup>nd</sup> Street N.E. from 7<sup>th</sup> Avenue to Dickens Avenue and south side of Dickens from Tupper Street N. to 3<sup>rd</sup> Street N.E. [EN. by Res. 120/02]

- end -


**SCHEDULE "D-1"**



SCHEDULE "D-2"

(front)

The City of  
**Portage la Prairie**



RESIDENTIAL PARKING PERMIT

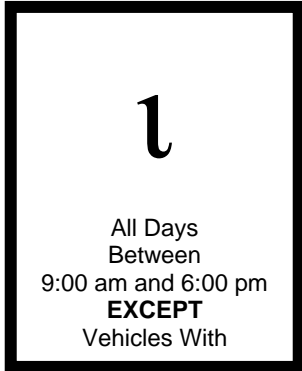
PERMIT # \_\_\_\_\_

For Resident of: \_\_\_\_\_

To be valid, permit must be displayed this side out according to instructions set out on the back hereof.

(back)

THIS PERMIT IS VALID FOR USE  
IN AREAS WHERE THE FOLLOWING  
PARKING RESTRICTION SIGNS ARE LOCATED



All Days  
Between  
9:00 am and 6:00 pm  
**EXCEPT**  
Vehicles With

Firmly affix this permit to the inside lower corner of the  
Windshield on the passenger's side of the vehicle.

(map of MDC area)

**SCHEDULE "E"**  
**to**  
**By-Law No. 01-8105**

**METERED SPACES [AM By-Law No. 13-8595]**

**ZONE A**

1. South side of Saskatchewan Avenue between 3<sup>rd</sup> St S.E. and 2<sup>nd</sup> Street S.W.
2. North side of Saskatchewan Avenue between 3<sup>rd</sup> St. N.E. and 2<sup>nd</sup> Street N.W.
3. Both sides of Royal Road N. between Saskatchewan Avenue and Lorne Avenue
4. Both sides of Royal Road S. between Saskatchewan Avenue and Countess Avenue
5. Both sides of Tupper St. N. between Saskatchewan Avenue and Lorne Avenue
6. Both sides of Tupper St. S. between Saskatchewan Avenue and Dufferin Avenue

**ZONE B**

7. South side of Saskatchewan Avenue between 5<sup>th</sup> Street S.E. and 3<sup>rd</sup> Street S.E and between 2<sup>nd</sup> St. S.W. and 4<sup>th</sup> St. S.W.
8. North side of Saskatchewan Avenue between 5<sup>th</sup> Street N.E. and 3<sup>rd</sup> Street N.E. and between 2<sup>nd</sup> St N.W. and 4<sup>th</sup> St. N.W.
9. West side of 5<sup>th</sup> St. S. E.
10. East side of 3<sup>rd</sup> St. S.E. between Saskatchewan Avenue and Countess Avenue
11. West side of 3<sup>rd</sup> St. S.E. between Saskatchewan Avenue and Countess Avenue
12. East side of 3<sup>rd</sup> Street N.E. between Saskatchewan Avenue and Lorne Avenue.
13. West side of 3<sup>rd</sup> Street N.E. between Saskatchewan Avenue and Lorne Avenue.
14. East side of 1<sup>st</sup> Street S.W. between Saskatchewan Avenue and Dufferin Avenue.
15. West side of 1<sup>st</sup> Street S.W. between Saskatchewan Avenue and Dufferin Avenue.
16. Both sides of 1<sup>st</sup> Street N.W. between Saskatchewan Avenue and Lorne Avenue.
17. Both sides of 2<sup>nd</sup> Street S.W. between Saskatchewan Avenue and Dufferin Avenue.
18. Both sides of 2<sup>nd</sup> Street N.W. between Saskatchewan Avenue and Lorne Avenue.

- end -

---

(map of designated highways)



<b>REQUEST FOR PARADE OR STREET CLOSURE</b>	
<b>PARADE:</b>	<b>STREET CLOSURE:</b>
<b>PROPOSED DATE:</b>	<b>START TIME:</b>
	<b>CONCLUSION TIME:</b>
<b>GROUP OR EVENT NAME:</b>	
<b>CONTACT PERSON:</b>	
<b>MAILING ADDRESS:</b>	
<b>TELEPHONE #:</b>	
<b>PROPOSED ROUTE OR AREA: (List streets affected or make a sketch of the route)</b>	
<b>APPLICANT'S SIGNATURE:</b>	<b>DATE:</b>
<b>APPROVED BY:</b>	<b>DATE:</b>

**School Bus Zones**

1. North Memorial School – on 4<sup>th</sup> Street for Special Needs pick up.
2. [DEL by Res. 280/06]
3. [DEL by Res. 280/06]
4. ~~Victoria School – on the east side of the school (for school buses and day care vans)~~ [DEL by Res. 237/12]
5. LaVerendrye School – on the north side of 7<sup>th</sup> Avenue at LaVerendrye School from the west driveway egress to a point 30 meters to the west.

*[FOR INFORMATION ONLY: Res.#282/01 authorized the creation of a bus stop at Portage ARC Industries at 1675 Saskatchewan Avenue West for the periods Monday to Friday, 8:30 a.m. to 9:15 a.m. and 3:30 p.m. to 4:00 p.m.]*

**Speed Zones**  
(all speed zones within City Limits are 50 km/h unless otherwise posted)

<b>Location</b>	<b><u>Speed Limit</u></b>
1. Eastbound on <b>Saskatchewan Ave. E.</b> from a point 50 m east of Angle Road to the easterly City limit	70 km/h
2. Westbound on <b>Saskatchewan Ave. E.</b> from the easterly City limit to a point 50 m east of 14 <sup>th</sup> St. N.E.	70 km/h
3. Westbound on <b>Saskatchewan Ave. W.</b> from 20 <sup>th</sup> Street W. to the Traffic Control Circle*	60 km/h
4. Eastbound on <b>Saskatchewan Ave. W.</b> from the Traffic Control Circle* to 20 <sup>th</sup> Street W.	60 km/h
5. Southbound on <b>PR 240</b> from a point 50 m south of Meighen Avenue to a point 200 m north of Old Bridge Road	70 km/h
6. Southbound on <b>PR 240</b> from a point 200 meters north of Old Bridge Road to the Assiniboine River	90 km/h
7. Northbound on <b>PR 240</b> from Assiniboine River to the south end of Hwy 1A overpass	90 km/h
8. Northbound on <b>PR 240</b> from south side of overpass to a point 50 m south of Meighen Avenue	70 km/h
9. Northbound on <b>PR 240</b> from a point 50 m north of 8 <sup>th</sup> Avenue to a point 1000 m north	70 km/h
10. Northbound on <b>PR 240</b> from the 1000 m point north of 8 <sup>th</sup> Avenue to Richardson Blvd.	90 km/h
11. Southbound on <b>PR 240</b> from Richardson Blvd to the 1000 m point north of 8 <sup>th</sup> Avenue	90 km/h
12. Southbound on <b>PR 240</b> from the 1000 m point to a point 50 m north of 8 <sup>th</sup> Avenue	70 km/h
13. <b>International Drive</b> (Island Park)	30 km/h
14. <b>George Hill Drive</b> (Island Park)	30 km/h
15. <b>Massey Crescent</b> (Island Park – by the deer pens)	30 km/h

<b>Location</b>	<b><u>Speed Limit</u></b>
16. <b>Brandon Avenue</b> east of George Hill Drive (Island Park)	30 km/h
17. <b>Royal Road</b> south of Crescent Road (across bridge and into Island Park)	30 km/h
18. Eastbound on <b>McCain Avenue</b> 500 m east of Westco Drive to east City Limits	70 km/h
19. Westbound on <b>McCain Avenue</b> from east City Limits to a point 500 m east of Westco Drive	70 km/h
20. <b>MacDonald Street</b> (west side of Industrial Park, runs north and south) [AM Res 178/05]	60 km/h
21. <b>Scott Avenue</b> [AM Res 178/05]	60 km/h
22. <b>Old Bridge Road</b> [AM Res 178/05]	60 km/h
23. <b>Stephens Avenue</b> north of Canadian Pacific Rail to the north City Limits [AM Res. 156/06]	70 km/hr
24. <b>Angle Road</b> [AM Res. 156/06]	70 km/hr
25. <b>Henderson Drive</b> from Bridge Road to the west City limits [AM Res. 156/06]	70 km/hr
26. <b>Highway Number One South Service Road</b> from the West city limits to Old Bridge Road and the east limit of River Lot 108 to the east City limits [AM Res. 156/06]	70 km/hr
27. <b>Highway Number One North Service Road</b> from a point 1000m west of Angle Road to Angle Road [AM Res. 156/06]	70 km/hr

\* The Traffic Control Circle is a 1500 ft circle around the railway crossing on Saskatchewan Avenue West that is under the control of the Highway Traffic Board. Saskatchewan Avenue West, up to the Traffic Control Circle, is a Designated Highway for which the City is the Traffic Authority (see attached map).

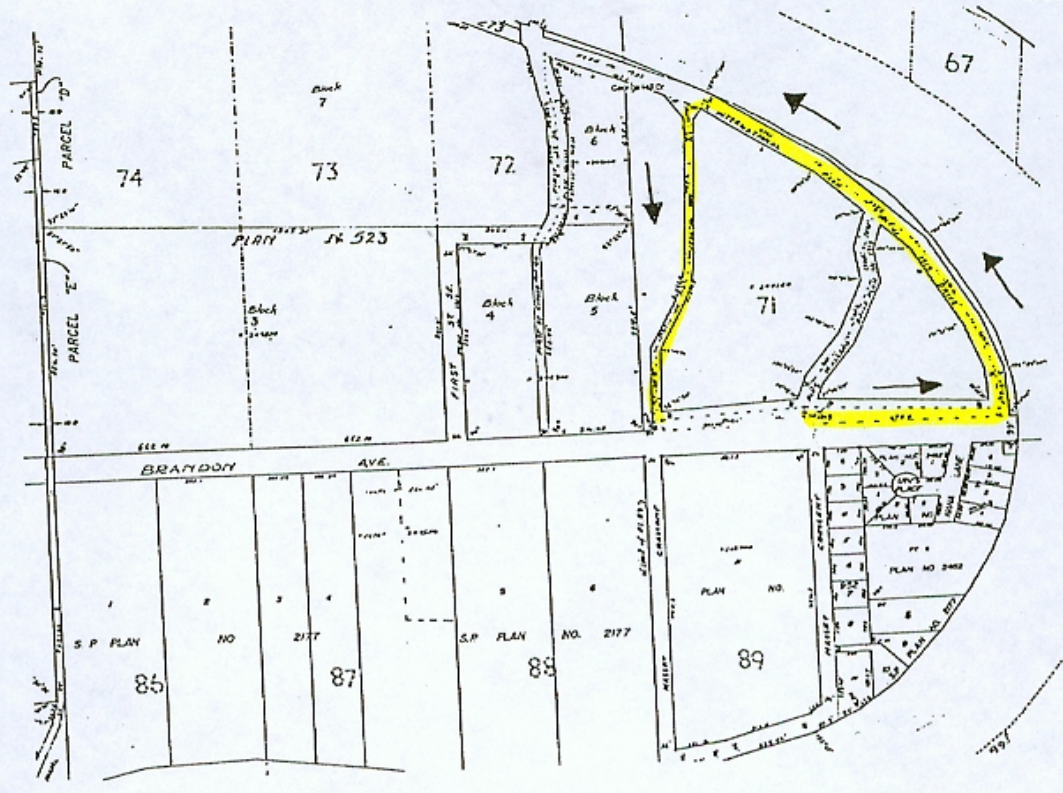
## SCHEDULE "J"

### ONE-WAY STREETS

1. International Drive, Brandon Avenue to George Hill Drive, as per schedule J-1.
2. George Hill Drive, International Drive to Brandon Avenue, as per schedule J-1.
3. Brandon Avenue, East leg of Massey Crescent to International Drive, as per schedule J-1.
4. ~~2<sup>nd</sup> St NE northbound from Saskatchewan Avenue to Princess Avenue; [AM By Law 10-8496] [Repealed by By-Law No. 11-8513]~~
5. ~~Princess Avenue eastbound from 2<sup>nd</sup> St NE to 3<sup>rd</sup> St NE; [AM By Law 10-8496] [Repealed by By-Law No. 11-8513]~~

### LANES/ALLEYS:

6. Westbound on South side of Saskatchewan Avenue;
  - a) Royal Road to Tupper Street;
  - b) Tupper Street to 1<sup>st</sup> Street West;
  - c) 1<sup>st</sup> Street West to 2<sup>nd</sup> Street West;
  - d) 2<sup>nd</sup> Street West to 3<sup>rd</sup> Street West.
7. Eastbound on North side of Saskatchewan Avenue;
  - a) 3<sup>rd</sup> Street West to 2<sup>nd</sup> Street West;
  - b) 2<sup>nd</sup> Street West to 1<sup>st</sup> Street West;
  - c) 1<sup>st</sup> Street West to Tupper Street;
  - d) Tupper Street to Royal Road;
  - e) Royal Road to 2<sup>nd</sup> Street East.



**City of Portage la Prairie  
TRAFFIC BY-LAW**

**INDEX**

- Dangerous Goods Truck Routes, 2
  - angle parking, 21
  - bicycles, 13, 35
  - block parties, 15
  - continuing consolidation, 1
  - dangerous condition, 14, 15
  - Dangerous Goods Prohibited Truck Routes, 2
  - device restrictions, 13
  - disabled
    - parking for, 23
    - parking on private property, 30
    - parking time limited, 26
  - double parked, 29
  - driveway, 33
  - electrical cord, 14
  - enforcement, 31
  - excavation, 33
  - fire hydrant, 21, 29
  - funeral procession, 12
  - handicapped
    - motorized mobility aid, 5
    - parking authorization, 6
    - parking for, 23
    - parking on private property, 30
    - parking time limited, 26
  - horses, 12
  - interpretation, 1
  - loading zone
    - definition, 5
    - effective hours of, 18
    - passengers only, 18
    - use of, 18
  - loud speaker, 18
  - Manitoba Developmental Centre, 24
  - metered space, 26, 27, 28, 52
  - moving van, 19
  - offence
    - general penalties, 35
    - penalties, 35
    - separate offence for each day, 35
  - one-way street, 21
  - parking restriction
    - advertising, 11
    - during snow clearing, 25
    - exemption for valid special parking permit, 24
    - loading zone, 18
    - parking on both sides of certain streets prohibited, 24
    - penalty for violation of, 23
  - pedestrians, 13
  - permits
    - driveway, 33
    - excavation, 33
    - parade, 17
    - special parking, 23
  - private property
    - definition, 6
    - handicapped parking on, 30
    - nuisance or dangerous condition, 15
    - parking on, 30
    - snow or ice, 16
  - railway crossing, 29
  - roller blades, 13
  - roller skates, 13
  - semi-trailer, 6, 8, 22
  - sidewalk
    - bicycle racks, 13
    - definition, 6
    - excavation permit, 33
    - not to excavate in or under, 33
    - not to park on, 21
    - nuisance or dangerous condition, 15
    - persons not to cause obstruction, 21
    - snow or ice - all properties, 16
    - snow or ice - business premises, 15
    - standing and parking prohibitions, 21
    - temporary use for special events, 15
  - skateboard, 13
  - skis, 13
  - snow removal, 11, 16
  - snowboard, 13
  - soliciting rides, 13
  - special event, 15
  - speed, 5, 17
  - stickers, 27, 28
  - toboggan, 13
  - towed, 8, 11, 17, 20, 25, 29, 31
  - towing, 8, 11, 17, 31
  - traffic authority, 10
  - traffic control devices, 10
    - advertising, 11
    - temporary, 11
  - written permission
    - definition, 8
    - to drive or haul equipment that may damage roadway, 18
    - to loan vehicle on street, 19
    - to ride horse on street, 12
    - to work upon roadway, 14**
-